



Postgraduate ODL Orientation Programme



School of
EDUCATION

JANUARY 2025

Table of Contents

Welcome Message	01
Orientation Programme	02 - 03
• Pre-Orientation	
• Orientation Schedule	
Orientation Checklist	04
Klang Valley Integrated Transit Map	05
Sunway Campus: Sunway City	06



Welcome Message



Associate Professor
Dr Malissa Maria Mahmud
Dean, School of Education

Welcome to the School of Education at Sunway University! We are excited to have you join our diverse and innovative academic community. Our mission is to cultivate outstanding educators and leaders who are prepared to tackle the challenges of modern education. We emphasize a strong foundation in both theoretical knowledge and practical skills, ensuring our graduates are well-equipped to make significant contributions to the educational sector.

Our programmes are meticulously designed to stay current with the latest trends and advancements in education. This dynamic curriculum, combined with our faculty's extensive expertise, provides an enriching learning experience that fosters critical thinking, creativity, and a passion for lifelong learning.

We are deeply committed to research, with various projects that address contemporary educational challenges. Our state-of-the-art facilities and active participation in groundbreaking research projects offer students the opportunity to engage in innovative work, enriching their academic journey and preparing them to be thought leaders in education.

We invite you to explore the myriad opportunities available at the School of Education. Together, we can make a meaningful impact on the future of education. We look forward to supporting you on your journey to becoming an inspiring educator. For more information, please visit our School of Education webpage.

Orientation Programme

Pre-Orientation

1 – 7 January 2025

Orientation

8 January 2025

Pre-Orientation

Please visit the University orientation [website](#) and go through the following (by 6 January 2025):

1 Let's Get You Started – IT Services

- Activate your student account to access your **iMail, eLearn, iZone and Microsoft Office 365**. (You may obtain your Student ID Number from your Offer Letter)
- Please note that the Student Account Activation can only be done 7 DAYS before semester commencement, i.e. from **6 January 2025 onwards**.



2 Let's Settle In

- **Campus Highlights**
 - > Campus Life at a Glance
 - > Campus Tour
- **Campus Life**
 - > Spotlight on Student Life
 - > International Students
 - > Stay Healthy, Stay Safe



3 Install Microsoft Teams and Zoom

Install Microsoft Teams and Zoom applications on your laptop, PC or smartphone. Ensure that you have activated your student account before you join live sessions in Microsoft Teams platform. Some of the live sessions would be done in Teams and Zoom.



4 Download Power Apps

Download Power Apps to access **Student App - Whizzy**, for information at your fingertips. You may access the app once you have activated your student account. The guide is available [here](#). Additionally, **Sunway MyCampus App** your official campus navigator, is available on the Apple App Store or Google Playstore.



Orientation Day 1

Pre-Orientation

1 – 7 January 2025

Orientation

8 January 2025

Instructions:

1. Please ensure that your student account has been activated before **8 January 2025**.

Wednesday | 8 January 2025

Time	Activity	Platform
6:30pm	<p>Orientation Webinar <i>by Education Counsellors</i></p> <p>Join in the Orientation webinar presented by your Education Counsellors via Zoom. Orientation webinar (60 minutes): If you are new to Sunway Online, this is a great chance for you to get introduced to the online learning process, the key features and structure of online learning at Sunway Online, and the role of the Education Counsellors in your learning journey. This workshop will walk you through the learning environment, eLearn, so that you can be aware of key features and how to locate important sections of the platform.</p> <ul style="list-style-type: none">• Welcome Speech & Programme Leader Briefing• Support Staff• Online Study Model• Degree Path• Getting Started• eLearn Preview• ED Preview• Fees• Managing Online Study• Library• Services & Support <p>Q & A <i>by Education Counsellors</i></p>	<p>Meeting Link</p> <p><i>Registration required</i></p> <p>After registering, you will receive a confirmation email containing information about joining the meeting</p>
7.30pm	<p>Information Skills Workshop <i>By: Ms Goh Wei Haan</i> <i>Head - Reference and Research & Academic Services</i></p> <p>Watch our Postgraduate Video catered just for you!</p>	

Orientation Checklist

PRE-ORIENTATION

- 1. Check for Welcome email from the University in your iMail**
iMail is your formal university email correspondence
- 2. Browse the Orientation website:**
[Orientation | Sunway University](#)
- 3. Check your orientation schedule**
- 4. Activate your student account**
Student Account Activation can only be done 7 DAYS before the semester commences
- 5. Clear your payments**
– tuition fees and other related semester fees
- 6. Test Your Technology**
Ensure your computer, webcam, microphone and internet connection are functioning properly

ORIENTATION DAY

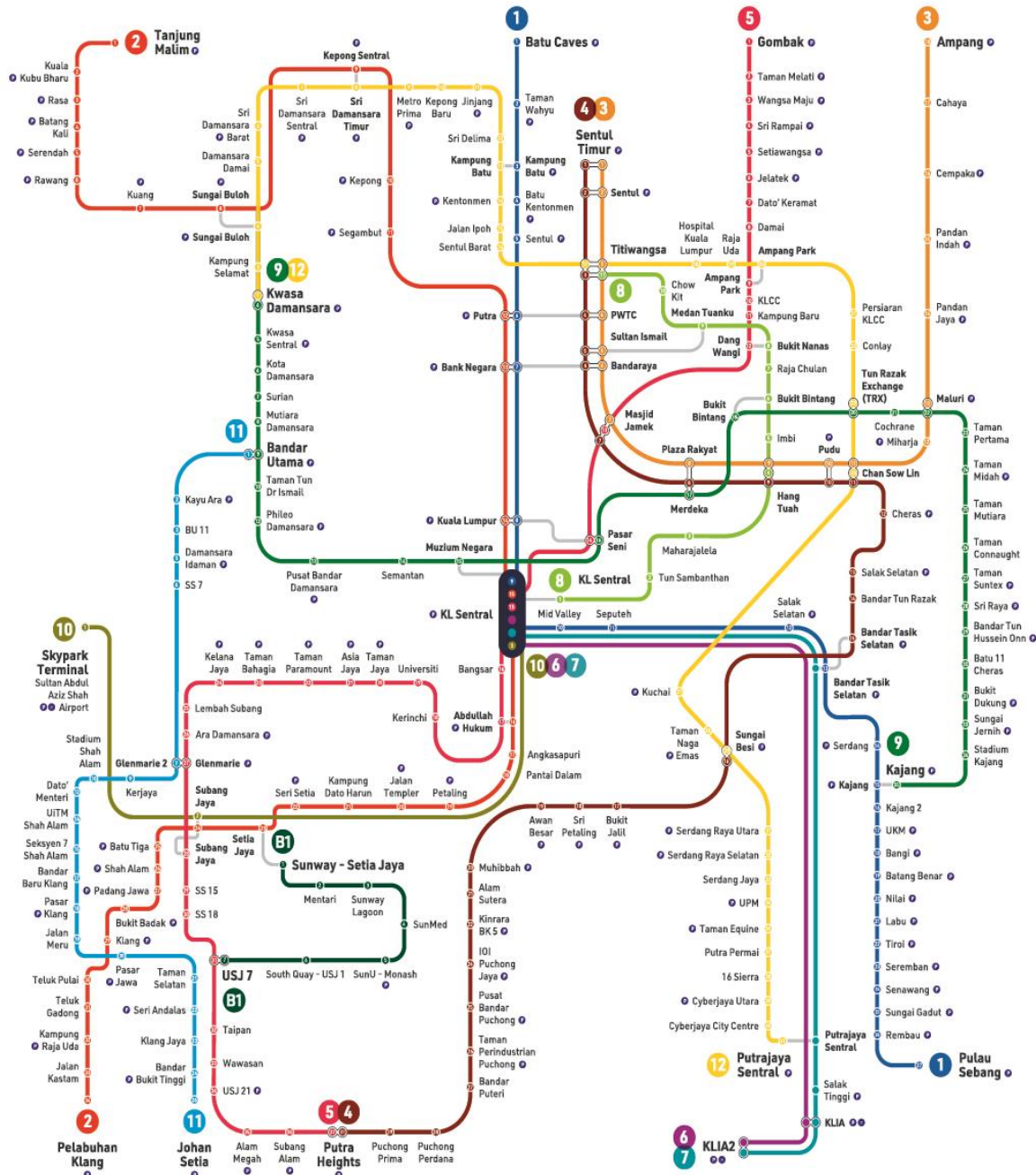
- 7. Attend Orientation Webinar**
Refer to your [orientation schedule](#) for details
- 8. Attend Information Skills Workshop**
Refer to your [orientation schedule](#) for details

POST-ORIENTATION

- 9. Familiarise Yourself with Online Learning Platforms**
Learn to navigate the university's learning management system and any other platforms used for coursework
- 10. Create a Study Plan**
Develop a schedule that includes dedicated study times and breaks to manage your coursework effectively
- 11. Access Library Resources Online**
Learn how to use the university's digital library and online resources for research and study

END OF ORIENTATION

Klang Valley Integrated Transit Map



1 KTM Larian Batu Caves - Putai Sebang
2 KTM Batu Caves - Putai Sebang Line
3 KTM Klang Tanjung Malim - Pelabuhan Klang
4 KTM Klang Tanjung Malim - Pelabuhan Klang Line
5 LRT Larian Ampang
6 LRT Ampang Line
7 LRT Larian Kelana Jaya
8 LRT Kelana Jaya Line
9 LRT Larian KUALA DENGKAS
10 LRT KUALA DENGKAS Line
11 ERL Larian KUALA TRONOH
12 ERL KUALA TRONOH Line
13 ERL Larian KUALA SEREMBAN
14 ERL KUALA SEREMBAN Line
15 MRT Larian Kajang
16 MRT Kajang Line
17 MRT Larian KL Sentral - Skypark Terminal
18 KTM KL Sentral - Terminal Skypark Line
19 MRT Larian Putrajaya
20 MRT Putrajaya Line
21 LRT Larian Shah Alam (Akan Datang)
22 LRT Shah Alam Line (Coming Soon)
23 BRT Sunway Line
24 BRT Sunway Line
25 Tempang Larian Kenderaan Park and Ride
26 Terminal Lapangan Terbang Airport

Stesen Sambungan / Connecting Station | Stesen Pertukaran / Interchange Station | Stesen / Station | Stesen Terminal / Terminal Station

Informasi Peta | Map Information



rapidKL

Waktu Operasi Perkhidmatan / Service Operating Hours
 Isnin - Sabtu / Monday - Saturday: 6:00 pagi / am - 12:30 tengah malam / am
 Ahad dan Cuti Umum / Sunday and Public Holidays: 6:00 pagi / am - 11:30 malam / pm
 *Waktu operasi perkhidmatan adalah tertakluk kepada keadaan dan keperluan semasa / Service operating hours are subject to current situation and needs.

03 7885 2585 | myrapid.com.my | suggest@rapidkl.com.my | MyRapidKL | AskRapidKL

For more details, visit: <https://myrapid.com.my/bus-train/rapid-kl/rapid-kl-integrated-transit-map/>

All information is correct at the time of printing (as of 26 November 2024). This schedule may be subject to change.

THE CAMPUS

All information is correct at the time of printing (as of 26 November 2024). This schedule may be subject to change.



Connectivity & Transportation

Covered Canopy Walkway

Free Shuttle Bus around Bandar Sunway

BRT Stations linking to KTM and LRT

On-Campus Accommodation

Sunway House Waterfront Residence

Sun-U Residence

Sunway House Waterfront Residence

Sun-U Apartment

PARKING OPTIONS*

SEASON PARKING AT SUNWAY PYRAMID

10 mins walk to campus (via Canopy Walk)

RM80 per month

(excluding weekends and public holidays)

HOW TO APPLY?

1 Prepare these information/documents to create your account

- i.) Student ID number
- ii.) Course Name
- iii.) Scanned copy of Student ID card

2 Create your Sunway Parking account

<https://seasonpass.sunwayparking.com/dashboard>

*Prices stated are subject to change

Incorporate walking into your daily routine to give your mood and health a boost!

SUNWAY UNIVERSITY BASEMENT PARKING

First 2 hours : RM2.00

Subsequent hour : RM1.00

Maximum charge per entry : RM5.00

Ticketless & cashless - Payment via: Touch & Go / Sunway Super App

BRT COMPLEX (PARK & RIDE)

Opposite Monash University

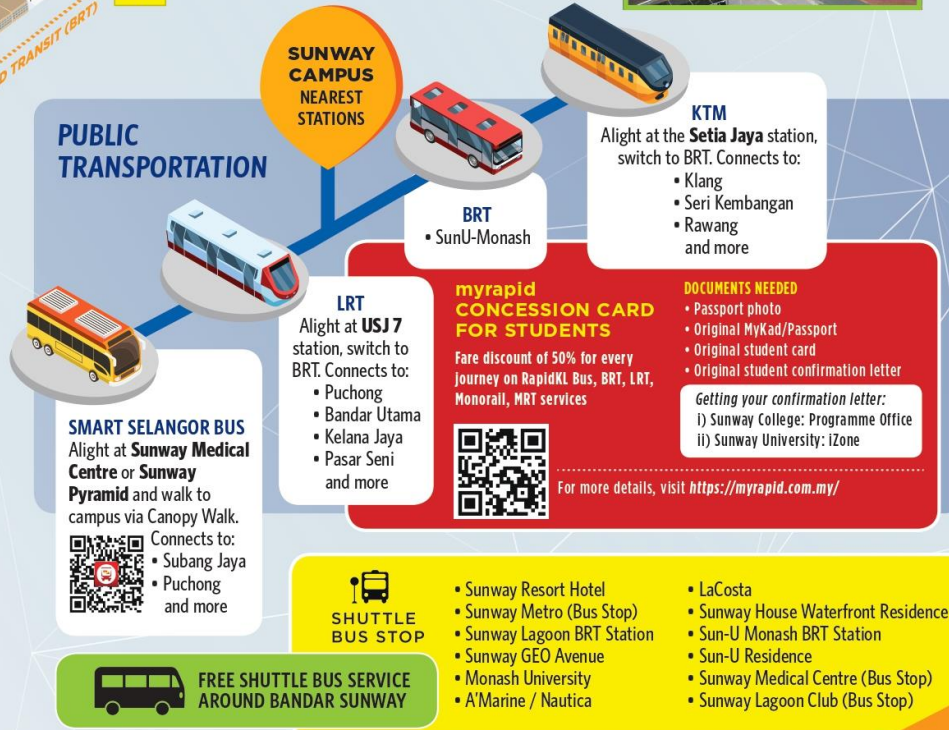
10 mins walk to campus (via Canopy Walk)

First 3 hours : RM3.00





Subsequent hour : RM1.00

Maximum charge per entry : RM7.00

PUBLIC TRANSPORTATION



**Follow Us on
Social Media:**

-  facebook.com/SunwayUniversity
-  [@SunwayU](https://twitter.com/SunwayU)
-  [@SunwayUniversity](https://www.instagram.com/SunwayUniversity)
-  [@SunwayUniversityOfficial](https://www.youtube.com/SunwayUniversityOfficial)
-  [linkedin.com/school/sunway.university](https://www.linkedin.com/school/sunway.university)

