



Postgraduate Orientation Programme

SUNWAY
UNIVERSITY 

School of
**ENGINEERING &
TECHNOLOGY**

JANUARY 2025

Table of Contents

Welcome Message	01
Orientation Programme	02 - 03
• Pre-Orientation	
• Orientation Schedule	
Orientation Checklist	04
Settling in at Sun-U: The Essential Guide	05
• Student Identification Card	
• Dress Code	
• Smoke-free Campus	
• Commuting to Campus	
Klang Valley Integrated Transit Map	06
Sunway Campus: Sunway City	07



Welcome Message



Professor Ir
Denny Ng Kok Sum
Dean, School of Engineering and
Technology

Welcome to the Student Cohort 2025!

I am delighted to extend my heartfelt welcome to our new students as you start a new journey at the School of Engineering and Technology (SET), Sunway University. I wish to congratulate each of you first, for choosing to study at Sunway University. As stated in the school mission, to provide industry-focused, research-led programmes of proven international quality in subject disciplines central to regional economic prosperity, we will be working together to support your learning journey in SET.

You are joining a remarkable community in SET, staff, and students who are excited to help you develop the skills and experience needed to pursue your career goals. Do take advantage of all the resources available to you, both within the School and at Sunway University. Beyond coursework and research, I encourage you to pursue a well-rounded experience. Branch out and find a student organization that shares your interests or connects with peers with similar interests.

We commit to guide you exceed your academic objectives, to enjoy both the rich experience of social life at this University while achieving the academic excellent which need for your future career. We cannot not be more privileged to welcome you into this vibrant learning community. We were hoping you can make the best use of your time here and have an unforgettable experience that will positively shape your future.

I wish you every success at Sunway University and I am confident that you will find it an immensely rewarding experience. Welcome to SET again!

Orientation Programme

Pre-Orientation

3 – 9 January 2025

Orientation

10 January 2025

Pre-Orientation

Please visit the University orientation [website](#) and go through the following before the main orientation.

1 Let's Get You Started – IT Services

- Activate your student account to access your **iMail, eLearn, iZone and Microsoft Office 365**. (You may obtain your Student ID Number from your Offer Letter)
- Please note that the Student Account Activation can only be done 7 DAYS before semester commencement, i.e. from **6 January 2025 onwards**.



2 Let's Settle In

- **Campus Highlights**
 - > Campus Life at a Glance
 - > Campus Tour
- **Campus Life**
 - > Spotlight on Student Life
 - > International Students
 - > Stay Healthy, Stay Safe



3 Install Microsoft Teams and Zoom

Install Microsoft Teams and Zoom applications on your laptop, PC or smartphone. Ensure that you have activated your student account before you join live sessions in Microsoft Teams platform. Some of the live sessions would be done in Teams and Zoom.



4 Download Power Apps and Sunway MyCampus App

Download Power Apps to access **Student App - Whizzy**, for information at your fingertips. You may access the app once you have activated your student account. The guide is available [here](#). Additionally, **Sunway MyCampus App** your official campus navigator, is available on the Apple App Store or Google Playstore.



Orientation Day

Pre-Orientation

3 – 9 January 2025

Orientation

10 January 2025

Instructions:

1. Please ensure that your student account has been activated before **10 January 2025**.
2. Login to SET eLearn page at this link: <https://elearn.sunway.edu.my> for more information.

Friday | 10 January 2025

Time	Activity	Venue
10.00am	Welcome by Deputy Dean (Research and Sustainability) <i>Professor Adarsh Kumar Pandey</i>	Meeting Room 1 East Wing, Level 3 Sun-U
10.30am	Welcome by Head of Department <i>Professor Saidur Rahman</i>	
10.45am	Your Educational Success Plan by Programme Leader <i>Assoc. Prof. Ts. Dr Farihahusnah Hussin</i>	
11.30am	Administrative Procedure by Programme Coordinator <i>Ms Foong Yee Ling</i>	
12.15pm	School Engagement Lunch	
3:00pm	Introduction to Library and Internet Resources Postgraduate - Library Video catered just for you!	Library Instructional Lab Basement Level

Orientation Checklist

PRE-ORIENTATION

- 1. Check for Welcome email from the University in your iMail**
iMail is your formal university email correspondence
- 2. Browse the Orientation website:**
[Orientation | Sunway University](#)
- 3. Check your orientation schedule**
- 4. Activate your student account**
*Student Account Activation can only be done 7 DAYS before the semester commences.
Not required if you already have an existing Sunway iMail account.*
- 5. Submit incomplete registration documents**
(if any) to srga-op@sunway.edu.my
- 6. Clear your payments**
tuition fees and other related semester fees

ORIENTATION

- 7. Attend school orientation**
Refer to your [orientation schedule](#) for details
- 8. Attend Introduction to Library and Internet Resources Briefing**
- 9. Collect your Student ID from School admin**

END OF ORIENTATION

Settling in at Sun-U: The Essential Guide

- **Student Identification Card**

You will **receive your** Student ID card with your photo, name and your student ID number **during School orientation**. This card shows you are part of Sunway University and helps you use different campus services. Remember, your ID card belongs to the university and cannot be passed to others. It is important to keep it safe and always have it with you while on campus. **If you happen to lose your student card, feel free to reach out to the Registry for guidance.**



- **Dress Code**

You are expected to dress neatly and modestly, taking cultural norms and sensitivity into consideration.

- **Smoke-free Campus**

You must not smoke and/or vape in any form, including the use of traditional cigarettes, electronic cigarettes, pipes, and other smoking devices, within the institution premises and all Student Residences managed by Sunway Education. Refer to the [Student Handbook](#) and the [Student Code of Conduct](#) for more information.



- **Commuting to Campus**

The **parking facilities** operate on a first-come, first-served basis. The campus basement parking is available at RM 5.00/day. Alternative parking at Sunway Pyramid and the Sunway BRT station is also available.



Student season parking is available at Sunway Pyramid and is priced at RM 80.00/month. You may apply via [Sunway Smart Parking](#) or the Sunway Super App. Feel free to contact the nearest carpark helpdesk at Sunway Pyramid for further information. Kompleks BRT Sunway parking is available at RM 7.00/day. All parking rates are subject to change.

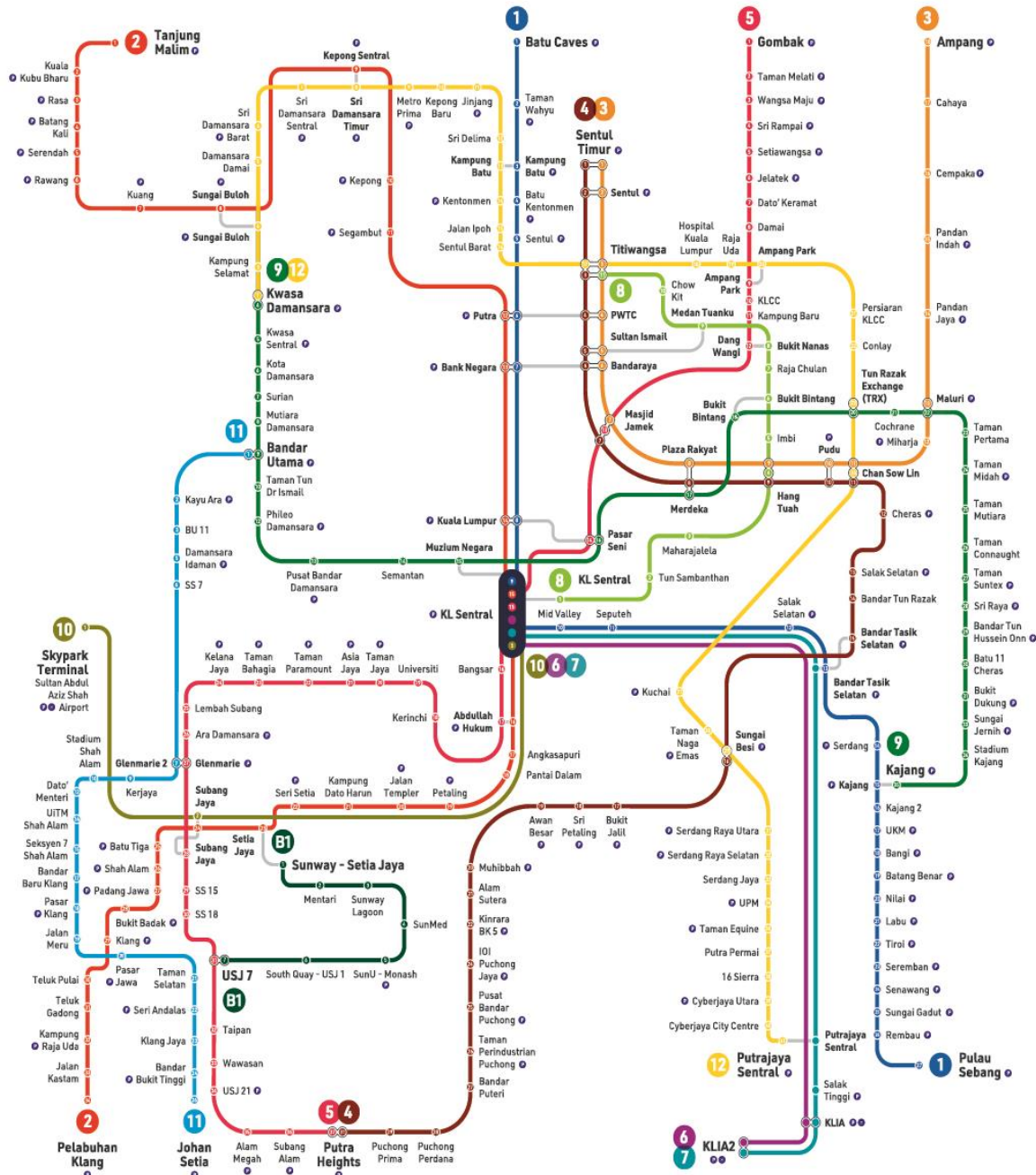


The **Free Shuttle Bus** operates within the city where the University is located and is available for all students, staff and visitors.

The university is also connected to the SunU-Monash BRT Station, which can be accessed via the **Bus Rapid Transit (BRT)-Sunway Line**.

Refer to the next page for the [Klang Valley Integrated Transit Map](#).

Klang Valley Integrated Transit Map



1 KTM Larian Batu Caves - Pulau Sebang
2 KTM Batu Caves - Pulau Sebang Line
3 KTM Klang Tanjung Malim - Pelabuhan Klang
4 KTM Klang Tanjung Malim - Pelabuhan Klang Line
5 LRT Larian Ampang
6 LRT Ampang Line
7 LRT Larian Kelana Jaya
8 LRT Kelana Jaya Line
9 ERL Larian KUALA DENGKAS
10 ERL KUALA DENGKAS Line
11 ERL Larian KUALA SEREMBAN
12 ERL KUALA SEREMBAN Line
13 MRT Larian Kajang
14 MRT Kajang Line
15 MRT Larian KL Sentral - Skypark Terminal
16 KTM KL Sentral - Terminal Skypark Line
17 MRT Larian Putrajaya
18 MRT Putrajaya Line
19 LRT Larian Shah Alam (Akan Datang)
20 LRT Shah Alam Line (Coming Soon)
21 BRT Sunway Line
22 BRT Sunway Line
23 Tempang Larian Kenderaan
24 Park and Ride
25 Terminal Lapangan Terbang
26 Airport

Stesen Sambungan / Connecting Station | Stesen Pertukaran / Interchange Station | Stesen / Station | Stesen Terminal / Terminal Station

Informasi Peta | Map Information



Waktu Operasi Perkhidmatan / Service Operating Hours
 Isnin - Sabtu / Monday - Saturday: 6:00 pagi / am - 12:30 tengah malam / am
 Ahad dan Cuti Umum / Sunday and Public Holidays: 6:00 pagi / am - 11:30 malam / pm
 *Waktu operasi perkhidmatan adalah tertakluk kepada keadaan dan keperluan semasa / Service operating hours are subject to current situation and needs.

03 7885 2585 | myrapid.com.my | suggest@rapidkl.com.my | MyRapidKL | AskRapidKL

For more details, visit: <https://myrapid.com.my/bus-train/rapid-kl/rapid-kl-integrated-transit-map/>

All information is correct at the time of printing (as of 20 December 2024). This schedule may be subject to change.

THE CAMPUS

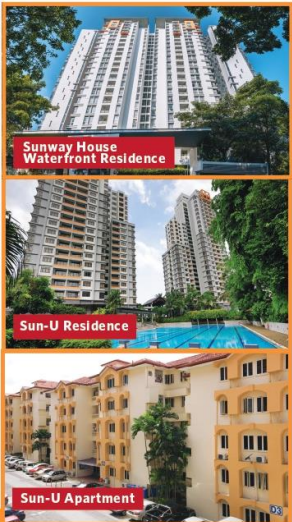
All information is correct at the time of printing (as of 20 December 2024). This schedule may be subject to change.



Connectivity & Transportation



On-Campus Accommodation



PARKING OPTIONS*

SEASON PARKING AT SUNWAY PYRAMID

10 mins walk to campus (via Canopy Walk)

RM80 per month
(excluding weekends and public holidays)

HOW TO APPLY?

- Prepare these Information/Documents to create your account
 - Student ID number
 - Course Name
 - Scanned copy of Student ID card
- Create your Sunway Parking account
<https://seasonpass.sunwayparking.com/dashboard>

*Prices stated are subject to change

Incorporate walking into your daily routine to give your mood and health a boost!

SUNWAY UNIVERSITY BASEMENT PARKING

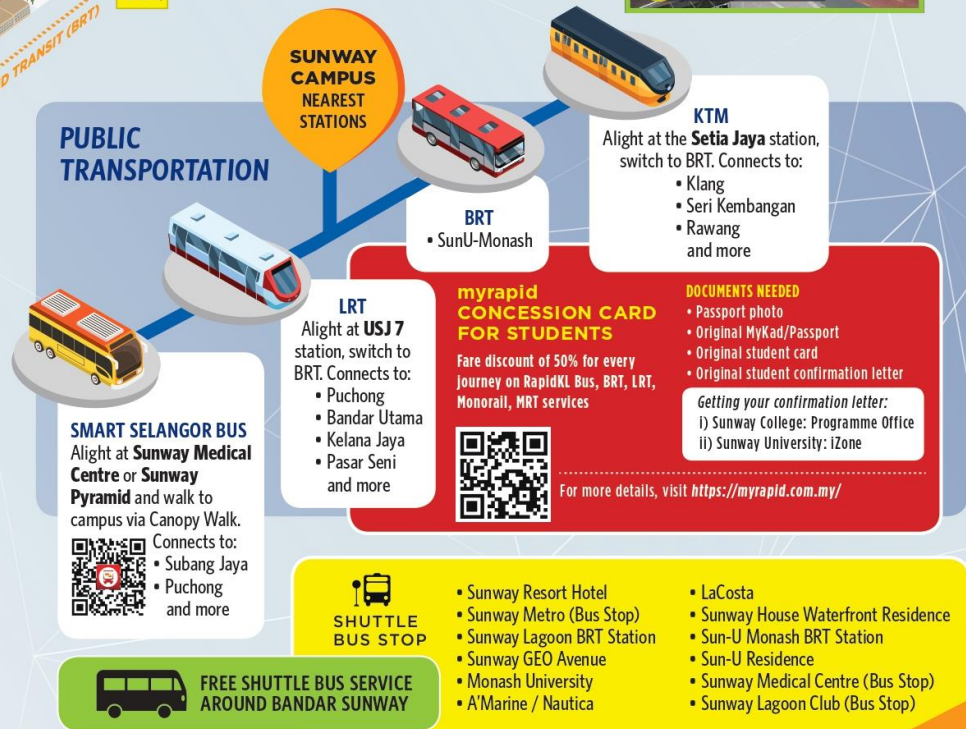
First 2 hours : RM2.00
Subsequent hour : RM1.00
Maximum charge per entry : RM5.00
Ticketless & cashless - Payment via: Touch & Go / Sunway Super App

BRT COMPLEX (PARK & RIDE)






Opposite Monash University
10 mins walk to campus (via Canopy Walk)
First 3 hours : RM3.00
Subsequent hour : RM1.00
Maximum charge per entry : RM7.00

PUBLIC TRANSPORTATION

SUNWAY CAMPUS NEAREST STATIONS



**Follow Us on
Social Media:**

-  facebook.com/SunwayUniversity
-  [@SunwayU](https://twitter.com/SunwayU)
-  [@SunwayUniversity](https://www.instagram.com/SunwayUniversity)
-  [@SunwayUniversityOfficial](https://www.youtube.com/SunwayUniversityOfficial)
-  [linkedin.com/school/sunway.university](https://www.linkedin.com/school/sunway.university)

