



Postgraduate Orientation Programme

SUNWAY
UNIVERSITY



School of
**MEDICAL &
LIFE SCIENCES**

JANUARY 2025

Table of Contents

Welcome Message	01
Orientation Programme	02 - 03
• Pre-Orientation	
• Orientation Schedule	
Orientation Checklist	04
Settling in at Sun-U: The Essential Guide	05
• Student Identification Card	
• Dress Code	
• Smoke-free Campus	
• Commuting to Campus	
Klang Valley Integrated Transit Map	06
The Campus: Sunway City	07



Welcome Message



Professor
Raja Affendi Raja Ali
Dean, School of Medical
and Life Sciences

The School of Medical and Life Sciences of Sunway University envisions to become a leading provider of healthcare and life sciences education with a dedicated pursuit of research and service excellence. The School provides a platform for an engaging and nurturing teaching and learning experience of the highest standards and quality. Furthermore, we have a very established biological, life sciences and psychology programme, that link and engage with many established industries. Additionally, we also collaborate with Harvard University in organising the Harvard's South East Asia Healthcare Leadership (SEAL) programme as well as with the University of Cambridge and University of Oxford on various educational and research initiatives.

Advancements in medicine and healthcare provision are driven by technological innovations and an improved understanding of the health disease continuum. Our academic staff have been trained in various healthcare and life sciences disciplines that allow for the integration of an interdisciplinary approach in our research endeavours. We have also fostered a collaborative network involving various national and international researchers that ensure that our focus is in discovering new knowledge and translating discoveries to modalities and strategies that ultimately, save and improve the quality of lives.

Orientation Programme

Pre-Orientation

3 – 9 January 2025

Orientation

10 January 2025

Pre-Orientation

Please visit the University orientation [website](#) and go through the following (by 10 January 2025):

1 Let's Get You Started – IT Services

- Activate your student account to access your **iMail**, **eLearn**, **iZone** and **Microsoft Office 365**. (You may obtain your Student ID Number from your Offer Letter)
- Please note that the Student Account Activation can only be done 7 DAYS before semester commencement, i.e. from **6 January 2025 onwards**.



2 Let's Settle In

- **Campus Highlights**
 - > Campus Life at a Glance
 - > Campus Tour
- **Campus Life**
 - > Spotlight on Student Life
 - > International Students
 - > Stay Healthy, Stay Safe



3 Install Microsoft Teams and Zoom

Install Microsoft Teams and Zoom applications on your laptop, PC or smartphone. Ensure that you have activated your student account before you join live sessions in Microsoft Teams platform. Some of the live sessions would be done in Teams and Zoom.



4 Download Power Apps and Sunway MyCampus App

Download Power Apps to access **Student App - Whizzy**, for information at your fingertips. You may access the app once you have activated your student account. The guide is available [here](#). Additionally, **Sunway MyCampus App** your official campus navigator, is available on the Apple App Store or Google Playstore.



Orientation Day

Pre-Orientation

3 – 9 January 2025

Orientation

10 January 2025

Instructions:

1. Please ensure that your student account has been activated before **10 January 2025**.
2. Login to SMLS eLearn page at this link: <https://elearn.sunway.edu.my> for more information.

Friday | 10 January 2025

Time	Activity	Venue
9:00am	Welcome and Introduction to SMLS Priorities Research Areas by the Associate Dean (Research and Postgraduate Studies) <i>Professor Dr Long Chiau Ming</i>	Meeting Room 1, Level 11, Sun-U
9:30am	Administrative Procedure by the Assistant Manager (Research and Postgraduate Studies) <i>Ms Nur Amalina Zainal Abidin</i>	
10:30am	WELCOME BY HEAD OF DEPARTMENT	
	Biomedical Sciences <i>Assoc. Prof. Dr Kavita Reginald</i>	Meeting Room 1, Level 11, Sun-U
	Psychology <i>Dr Woo Pei Jun</i>	Meeting Room 2, Level 11, Sun-U
	YOUR EDUCATIONAL SUCCESS PLAN BY PROGRAMME LEADER	
	Biomedical Sciences Master in Life Sciences & PhD in Biology <i>Dr Wu Yuan Seng</i> Master & PhD in Medical Sciences <i>Dr Chook Jack Bee</i>	Meeting Room 1, Level 11, Sun-U Consultation Room 1, Level 11, SMLS Office
	Psychology Master in Psychology & PhD in Psychology <i>Dr Lee Ai-Suan</i>	Meeting Room 2, Level 11, Sun-U
11:30am	School of Medical and Life Sciences Tour <i>Programme Coordinator</i>	

Orientation Checklist

PRE-ORIENTATION

- 1. Check for Welcome email from the University in your iMail**
iMail is your formal university email correspondence
- 2. Browse the Orientation website:**
[Orientation | Sunway University](#)
- 3. Check your orientation schedule**
- 4. Activate your student account**
*Student Account Activation can only be done 7 DAYS before the semester commences.
Not required if you already have an existing Sunway iMail account.*
- 5. Submit incomplete registration documents**
(if any) to srga-op@sunway.edu.my
- 6. Clear your payments**
tuition fees and other related semester fees

UNIVERSITY ORIENTATION (DAY 1)

- 7. Attend physical University orientation**
Refer to your [orientation schedule](#) for details
- 8. Collect your Student ID from School admin**

END OF ORIENTATION

Settling in at Sun-U: The Essential Guide

- **Student Identification Card**

You will **receive your** Student ID card with your photo, name and your student ID number **during School orientation**. This card shows you are part of Sunway University and helps you use different campus services. Remember, your ID card belongs to the university and cannot be passed to others. It is important to keep it safe and always have it with you while on campus. **If you happen to lose your student card, feel free to reach out to the Registry for guidance.**



- **Dress Code**

You are expected to dress neatly and modestly, taking cultural norms and sensitivity into consideration.

- **Smoke-free Campus**

You must not smoke and/or vape in any form, including the use of traditional cigarettes, electronic cigarettes, pipes, and other smoking devices, within the institution premises and all Student Residences managed by Sunway Education. Refer to the [Student Handbook](#) and the [Student Code of Conduct](#) for more information.



- **Commuting to Campus**

The **parking facilities** operate on a first-come, first-served basis. The campus basement parking is available at RM 5.00/day. Alternative parking at Sunway Pyramid and the Sunway BRT station is also available.



Student season parking is available at Sunway Pyramid and is priced at RM 80.00/month. You may apply via [Sunway Smart Parking](#) or the Sunway Super App. Feel free to contact the nearest carpark helpdesk at Sunway Pyramid for further information. Kompleks BRT Sunway parking is available at RM 7.00/day. All parking rates are subject to change.

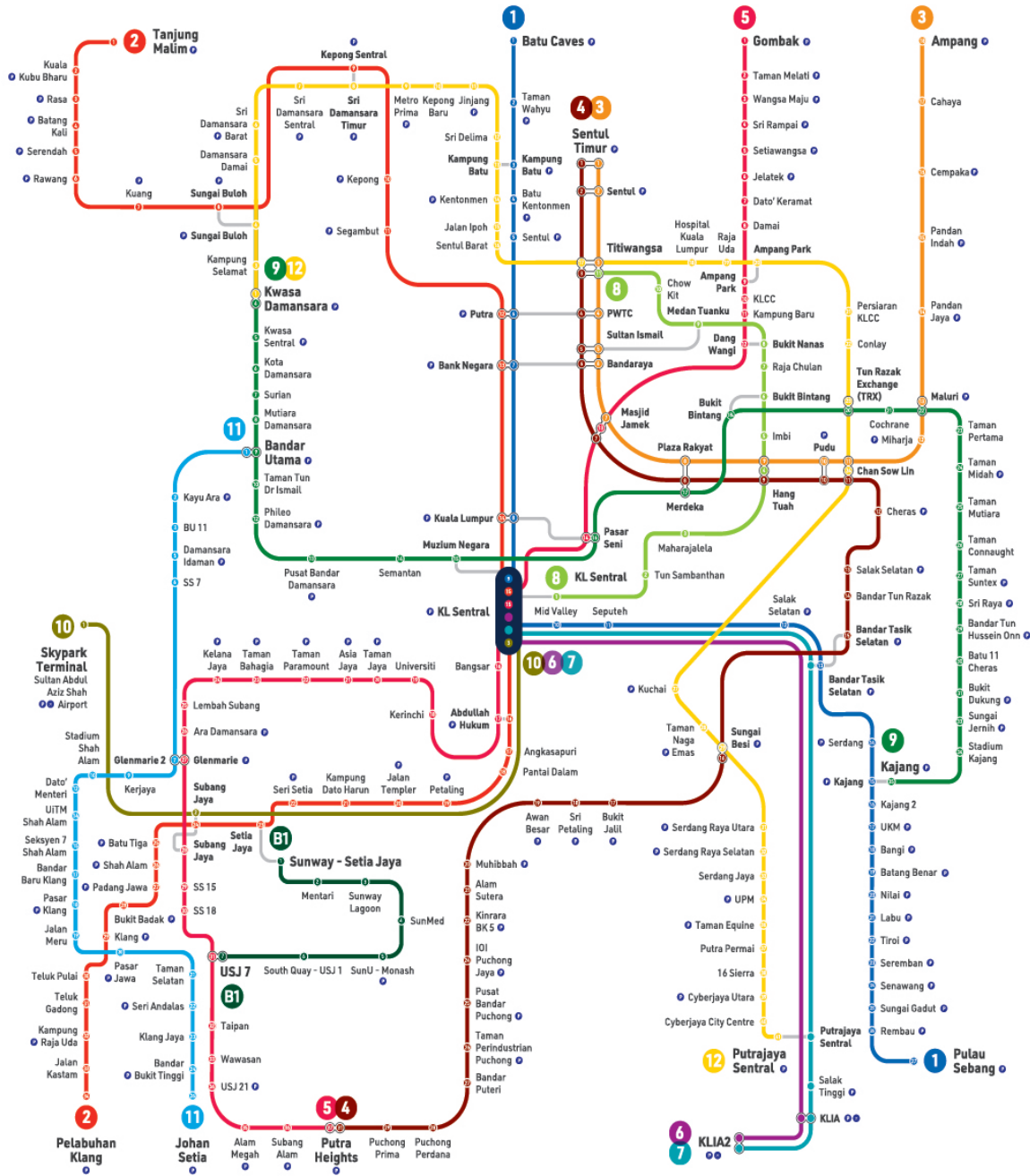


The **Free Shuttle Bus** operates within the city where the University is located and is available for all students, staff and visitors.

The university is also connected to the SunU-Monash BRT Station, which can be accessed via the **Bus Rapid Transit (BRT)-Sunway Line**.

Refer to the next page for the [Klang Valley Integrated Transit Map](#).

Klang Valley Integrated Transit Map



Informasi Peta | Map Information

1 KTM Larian Batu Caves - Pulau Sebang
2 KTM Larian Tanjung Malim - Pelabuhan Klang
3 KTM Larian Tanjung Malim - Pelabuhan Klang
4 LRT Larian Ampang
5 LRT Larian Sri Petaling
6 LRT Larian Kelana Jaya
7 LRT Kelana Jaya Line
8 ERL Larian KLIA Transit
9 MRT Larian Kajang
10 MRT Larian Kajang
11 LRT Larian Shah Alam (Alam Datang)
12 BRT Sunway Line
13 BRT Sunway Line
14 Terminal Lapangan Terbang
15 Terminal Lapangan Terbang Airport

Waktu Operasi Perkhidmatan/Service Operating Hours
 Isnin - Sabtu/ Monday - Saturday: 6:00 pagi/ am - 12:30 tengah malam/ am
 Ahad dan Cuti Umum/ Sunday and Public Holidays: 6:00 pagi/ am - 11:30 malam/ pm
 *Waktu operasi perkhidmatan adalah tertakluk kepada keadaan dan keperluan semasa/ Service operating hours are subject to current situation and needs.
 03 7885 2585 | myrapid.com.my | suggest@rapidkl.com.my | MyRapidKL | AskRapidKL

For more details, visit: <https://myrapid.com.my/bus-train/rapid-kl/rapid-kl-integrated-transit-map/>

All information is correct at the time of printing (as of 2 January 2025). This schedule may be subject to change.

THE CAMPUS

All information is correct at the time of printing (as of 2 January 2025). This schedule may be subject to change.



Connectivity & Transportation



On-Campus Accommodation



PARKING OPTIONS*

SEASON PARKING AT SUNWAY PYRAMID

10 mins walk to campus (via Canopy Walk)

RM80 per month
(excluding weekends and public holidays)

HOW TO APPLY?

- Prepare these information/documents to create your account
 - Student ID number
 - Course Name
 - Scanned copy of Student ID card

- Create your Sunway Parking account
<https://seasonpass.sunwayparking.com/dashboard>

*Prices stated are subject to change

Incorporate walking into your daily routine to give your mood and health a boost!

SUNWAY UNIVERSITY BASEMENT PARKING

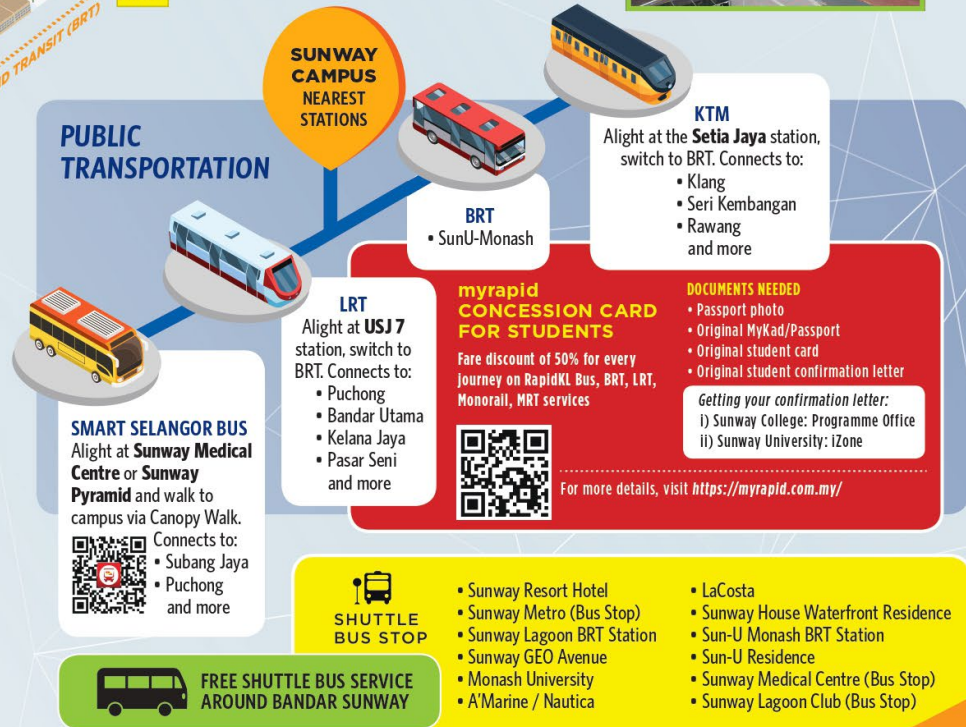
First 2 hours : RM2.00
Subsequent hour : RM1.00
Maximum charge per entry : RM5.00
Ticketless & cashless - Payment via: Touch & Go / Sunway Super App

BRT COMPLEX (PARK & RIDE)





Opposite Monash University
10 mins walk to campus (via Canopy Walk)
First 3 hours : RM3.00
Subsequent hour : RM1.00
Maximum charge per entry : RM7.00

PUBLIC TRANSPORTATION

SUNWAY CAMPUS NEAREST STATIONS



**Follow Us on
Social Media:**

-  facebook.com/SunwayUniversity
-  [@SunwayU](https://twitter.com/SunwayU)
-  [@SunwayUniversity](https://instagram.com/SunwayUniversity)
-  [@SunwayUniversityOfficial](https://youtube.com/SunwayUniversityOfficial)
-  linkedin.com/school/sunway.university

