



# Undergraduate Orientation Programme

**SUNWAY**  
UNIVERSITY



School of  
**MEDICAL &  
LIFE SCIENCES**

FEBRUARY 2025



# Table of Contents

<b>Welcome Message</b>	01
<b>Orientation Programme</b>	02 - 06
• Pre-Orientation	
• PTPTN Loan	
• International Student Welcome Week	
• Orientation Schedule	
<b>Orientation Checklist</b>	07
<b>Campus Activities Calendar</b>	08
<b>Settling in at Sun-U: The Essential Guide</b>	09
• Student Identification Card	
• Dress Code	
• Smoke-free Campus	
• Commuting to Campus	
<b>Klang Valley Integrated Transit Map</b>	10
<b>The Campus: Sunway City</b>	11



# Welcome Message



Professor  
**Raja Affendi Raja Ali**  
Dean, School of Medical  
and Life Sciences

The School of Medical and Life Sciences of Sunway University envisions to become a leading provider of healthcare and life sciences education with a dedicated pursuit of research and service excellence. The School provides a platform for an engaging and nurturing teaching and learning experience of the highest standards and quality. Furthermore, we have a very established biological, life sciences and psychology programme, that link and engage with many established industries. Additionally, we also collaborate with Harvard University in organising the Harvard's South East Asia Healthcare Leadership (SEAL) programme as well as with the University of Cambridge and University of Oxford on various educational and research initiatives.

Advancements in medicine and healthcare provision are driven by technological innovations and an improved understanding of the health disease continuum. Our academic staff have been trained in various healthcare and life sciences disciplines that allow for the integration of an interdisciplinary approach in our research endeavours. We have also fostered a collaborative network involving various national and international researchers that ensure that our focus is in discovering new knowledge and translating discoveries to modalities and strategies that ultimately, save and improve the quality of lives.

# Orientation Programme

Pre-Orientation

30 Jan. – 5 Feb. 2025

Orientation

6 – 7 February 2025

## Pre-Orientation

Please visit the University orientation [website](#) and go through the following (by 6 February 2025):

### 1 Let's Get You Started – IT Services

- Activate your student account to access your **iMail**, **eLearn**, **iZone** and **Microsoft Office 365**. (You may obtain your Student ID Number from your Offer Letter)
- Please note that the Student Account Activation can only be done 7 DAYS before semester commencement, i.e. from **3 February 2024 onwards**.



### 2 Let's Settle In

- **Campus Highlights**
  - > Campus Life at a Glance
  - > Campus Tour
- **Campus Life**
  - > Spotlight on Student Life
  - > International Students
  - > Stay Healthy, Stay Safe



### 3 Install Microsoft Teams and Zoom

Install Microsoft Teams and Zoom applications on your laptop, PC or smartphone. Ensure that you have activated your student account before you join live sessions in Microsoft Teams platform. Some of the live sessions would be done in Teams and Zoom.



### 4 Download Power Apps and Sunway MyCampus App

Download Power Apps to access **Student App - Whizzy**, for information at your fingertips. You may access the app once you have activated your student account. The guide is available [here](#). Additionally, **Sunway MyCampus App**, your official campus navigator, is available on the Apple App Store or Google Playstore.





# Orientation Programme

Pre-Orientation

30 Jan. – 5 Feb. 2025

Orientation

6 – 7 February 2025

## PTPTN Loan *(Malaysian Students ONLY)*

This loan aims to assist you in managing your tuition fees and living expenses as you pursue your academic journey. For more information, you may refer [here](#).

## International Student Welcome Week

*(International Students ONLY)*

Join our week-long programme designed just for you! Explore our country, culture, and language in an immersive experience. The International Student Welcome Week will be held on **4 – 8 February 2025**.

For more information, check us out [here](#).

## Freshman Fiesta

On **13 February 2025**, get to know your campus surroundings with fun-filled activities, refreshments and a chance for you to mix & mingle with one another.

Register [here](#) or scan the QR code to register.



# Orientation Day 1

Pre-Orientation

30 Jan. – 5 Feb. 2025

Orientation

6 – 7 February 2025

## Instructions:

1. Please ensure that your student account has been activated before **6 February 2025**.
2. Login to SMLS eLearn page at this link: <https://elearn.sunway.edu.my> for more information.

## Thursday | 6 February 2025

Time	Activity	Venue
9:00am	<b>Registration</b>	Jeffrey Cheah Hall, Level 4, North Building, Sunway College
9:30am	<b>Orientation: Your First Step to Campus Life</b> <i>Orientation Leaders</i>	
9:35am	<b>SPOTLIGHT</b> (by Student LIFE) SPOTLIGHT aims to provide you with information on the services and activities provided by Sunway Student LIFE. Join us to find out more!	
10:45am	<b>Welcome Remarks by President, Sunway University</b> <i>Professor Sibrandes Poppema</i>	
11:00am	<b>Welcome Remarks by Group Chief Executive Officer, Sunway Education Group</b> <i>Prof. Dato' Elizabeth Lee</i>	
11:15am	<b>SUSC 101</b> Find out more about Sunway University Student Council (SUSC), their roles, and the events and initiatives lined up just for you.	
12:00pm	<b>Lunch Break</b> ( <i>Free and Easy</i> )	
1:45pm	<b>Registration and Student ID Collection</b> <i>SMiLeS Admin together with Psychology Club and Sunway Biological Society</i>	Hall 3, Graduate Centre
2:00pm	<b>Welcome by Dean of School</b> <i>Professor Dr Raja Affendi Raja Ali</i>	
2:20pm	<b>Adjourn to Department Briefing</b> <ul style="list-style-type: none"> <li>• Department of Biomedical Sciences – Hall 2</li> <li>• Department of Psychology – Hall 3</li> </ul>	

# Orientation Day 1

Pre-Orientation

30 Jan. – 5 Feb. 2025

Orientation

6 – 7 February 2025

## Thursday | 6 February 2025

Time	Activity	Venue
2:30pm	<b>WELCOME BY HEAD OF DEPARTMENT</b>	Graduate Centre
	<b>Department of Biomedical Sciences – DBS</b> <i>Associate Professor Dr Kavita Reginald</i>	Hall 2
	<b>Department of Psychology – DPSY</b> <i>Professor Keng Shian Ling</i>	Hall 3
2:45pm	<b>YOUR EDUCATIONAL SUCCESS PLAN</b>	Graduate Centre
	<b>Department of Biomedical Sciences – DBS</b> <u>BIOP – BSc (Hons) Biology with Psychology</u> <i>Dr Lim Hui Xuan</i>	Hall 2
	<u>MBIO – BSc (Hons) Medical Biotechnology</u> <i>Associate Professor Dr Felicia Chung</i>	
	<u>BIOM – BSc (Hons) Biomedicine</u> <i>Dr Ser Hooi Leng</i>	
	<b>Department of Psychology – DPSY</b> <u>BPSY - BSc (Hons) Psychology</u> <i>Dr Eliza Berezina</i>	Hall 3
3:30pm	<b>GUIDES FOR YOUR JOURNEY I</b> <i>Administrative Procedures and Steps</i>	Graduate Centre
	<b>Department of Biomedical Sciences – DBS</b> <i>Ms Natalina Aseervadam</i>	Hall 2
	<b>Department of Psychology – DPSY</b> <i>Ms Michelle Tan</i>	Hall 3
4:00pm	<b>ONLINE SUBJECT ENROLMENT</b>	Graduate Centre
	<b>Department of Biomedical Sciences – DBS</b> <i>Ms Regina Saminathan</i>	Hall 2
	<b>Department of Psychology – DPSY</b> <i>Ms Angie Chin</i>	Hall 3
4:45pm	<b>End of Day 1</b>	

# Orientation Day 2

Pre-Orientation

30 Jan. – 5 Feb. 2025

Orientation

6 – 7 February 2025

## Friday | 7 February 2025

Time	Activity	Venue
10:00am	<b>Arrival and Ice-Breaking</b> <i>Psychology Club</i> <i>Sunway Biological Society</i>	Hall 3, Graduate Centre
10:30am	<b>Clubs and Societies Get-to-Know</b> <i>Psychology Club</i> <i>Sunway Biological Society</i>	
11:00am	<b>Guides for Your Journey II</b> Compulsory Lab Safety Briefing LinkedIn Briefing Q & A with SMiLes Admin, SPC and SBioS	
12:00pm	<b>SMiLeS Tour</b> Important places to know: Labs, Academic Offices and Admin Office	
12:30pm	<b>Lunch Break</b> ( <i>Free and Easy</i> )	
2:30pm	<b>LeAD (Learning Advantage) Session</b> <i>by Centre for English Language Studies (CELS)</i>  LeAd will introduce Sunway University to you and help you to acclimatise to your student life on campus. This workshop aims to create awareness of the importance of learning in a social environment. Come and join us to find out more about effective learning and coping mechanisms at Sunway University.	UC-8-7 – UC-8-14 Level 8, Sun-U
4:30pm	<b>End of Day 2</b>	



# Orientation Checklist

## PRE-ORIENTATION

- 1. Check for Welcome email from the University in your iMail**  
*iMail is your formal university email correspondence*
- 2. Browse the Orientation website:**  
[Orientation | Sunway University](#)
- 3. Check your orientation schedule**
- 4. Activate your student account**  
*Student Account Activation can only be done 7 DAYS before the semester commences.  
Not required if you already have an existing Sunway iMail account.*
- 5. Submit incomplete registration documents (if any) to [srga-op@sunway.edu.my](mailto:srga-op@sunway.edu.my)**
- 6. Clear your payments**  
*– tuition fees and other related semester fees*
- 7. Register for [Library Tour](#)**
- 8. Download [Whizzy App](#) and [Sunway MyCampus App](#) from Apple App Store or Google Playstore**
- 9. Register for [International Student Welcome Week](#) (International Students Only)**

## UNIVERSITY/ SCHOOL ORIENTATION (DAY 1)

- 10. Attend physical University/School orientation**  
*Refer to your [orientation schedule](#) for details*
- 11. Collect your Student ID from School admin**
- 12. Online Subject Enrolment**  
*Complete your online subject enrolment before the semester starts. Liaise with your School Admin if you require further assistance.*

## SCHOOL ORIENTATION (DAY 2)

- 13. Attend physical School orientation**  
*Refer to your [orientation schedule](#) for details.*
- 14. Attend LeAd (Learning Advantage) Workshop**  
*Refer to your [orientation schedule](#) for details.*

## FRESHMAN FIESTA

- 15. Attend the Welcome Party on 13 February 2025 at 6.00 p.m. in The Zone, SET Building**  
*Get to know your campus surroundings with fun-filled activities, refreshments and a chance for you to mix & mingle with one another.*

# Campus Activities Calendar

JANUARY - MARCH 2025

**14-15**  
JANUARY

## ASEAN WORKSHOP FOR SUSTAINABLE DEVELOPMENT 2025

JC1, Sunway University



**18-19**  
JANUARY

## SUNWAY ROOKIEVERSTY (DODGEBALL TOURNAMENT)

The Zone, SET Building



**4-8**  
FEBRUARY

## INTERNATIONAL STUDENT WELCOME WEEK

Around Campus



**13**  
FEBRUARY

## FRESHMAN FIESTA

The Zone, SET Building



**8, 9, 15, 16,  
22, 23 FEB  
1-2 MAR**

## MAKING A SCENE: BITE-SIZED PRACTICAL EXPLORATIONS IN THEATREMAKING

Rooftop Theatre, Sunway College



**13**  
FEBRUARY

## C&S RECRUITMENT WEEK

JC Hall, Sunway Campus



**15**  
FEBRUARY

## PALS TO PAIRS: MINGLE, MIX & MATCH

Rooftop Terrace, Sunway Campus



**18-21**  
FEBRUARY

## SUNWAY UNIVERSITY CONVOCATION CEREMONY

Amphitheatre @ Sunway Lagoon



**22**  
FEBRUARY

## SUNWAY BADMINTON TOURNAMENT

The Zone/ JC Hall



**20**  
MARCH

## C&S WORKSHOP

JC2, Sunway University



# Settling in at Sun-U: The Essential Guide

- **Student Identification Card**

You will **receive your** Student ID card with your photo, name and your student ID number **during School orientation**. This card shows you are part of Sunway University and helps you use different campus services. Remember, your ID card belongs to the university and cannot be passed to others. It is important to keep it safe and always have it with you while on campus. **If you happen to lose your student card, feel free to reach out to the Registry for guidance.**



- **Dress Code**

You are expected to dress neatly and modestly, taking cultural norms and sensitivity into consideration.

- **Smoke-free Campus**

You must not smoke and/or vape in any form, including the use of traditional cigarettes, electronic cigarettes, pipes, and other smoking devices, within the institution premises and all Student Residences managed by Sunway Education. Refer to the [Student Handbook](#) and the [Student Code of Conduct](#) for more information.



- **Commuting to Campus**

The **parking facilities** operate on a first-come, first-served basis. The campus basement parking is available at RM 5.00/day. Alternative parking at Sunway Pyramid and the Sunway BRT station is also available.



Student season parking is available at Sunway Pyramid and is priced at RM 80.00/month. You may apply via [Sunway Smart Parking](#) or the Sunway Super App. Feel free to contact the nearest carpark helpdesk at Sunway Pyramid for further information. Kompleks BRT Sunway parking is available at RM 7.00/day. All parking rates are subject to change.

The **Free Shuttle Bus** operates within the city where the University is located and is available for all students, staff and visitors.

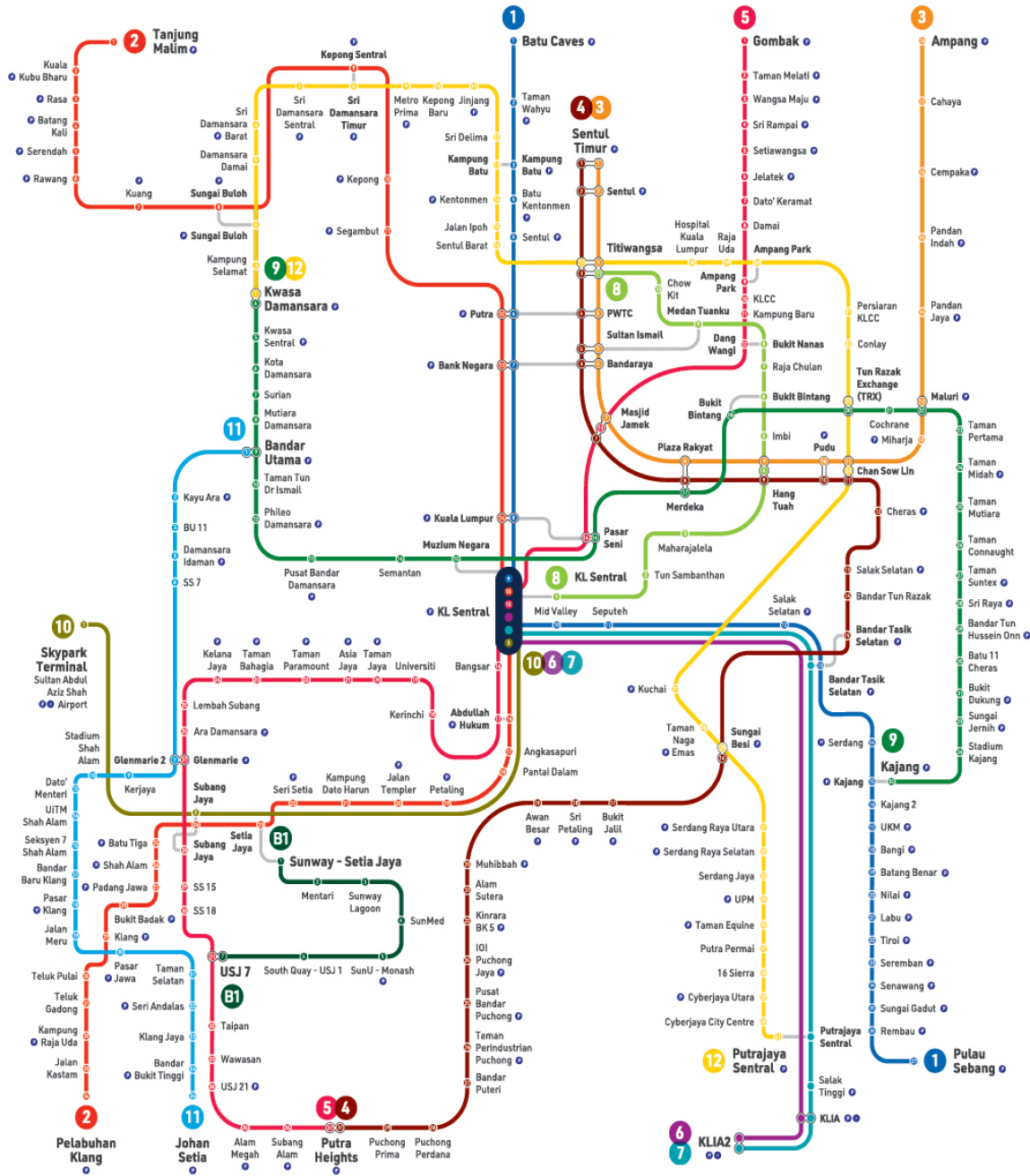


The university is also connected to the SunU-Monash BRT Station, which can be accessed via the **Bus Rapid Transit (BRT)-Sunway Line**.

Refer to the next page for the [Klang Valley Integrated Transit Map](#).



# Klang Valley Integrated Transit Map



**1** KTM Larian Batu Caves - Pulau Sebang  
**2** KTM Batu Caves - Pulau Sebang Line  
**3** KTM Larian Tanjung Malim - Pelabuhan Klang  
**4** KTM Tanjung Malim - Pelabuhan Klang Line  
**5** LRT Larian Ampang  
**6** LRT Ampang Line  
**7** LRT Larian Kelana Jaya  
**8** LRT Kelana Jaya Line  
**9** SRL Larian KLIA Ekspres  
**10** ERL Larian KLIA Transit  
**11** MRT Larian Kajang  
**12** MRT Kajang Line  
**13** MRT Larian KL Sentral - Skypark Terminal  
**14** KTM KL Sentral - Terminal Skypark Line  
**15** LRT Larian Shah Alam (Alam Datang)  
**16** LRT Shah Alam Line (Coming Soon)  
**17** MRT Larian Putrajaya  
**18** MRT Putrajaya Line  
**19** BRT Sunway Line  
**20** BRT Sunway Line  
**21** Terminal Lapangan Terbang  
**22** Terminal Lapangan Terbang Airport

Stesen Sambungan Connecting Station  
 Stesen Pertukaran Interchange Station  
 Stesen Station  
 Stesen Terminal Terminal Station

Informasi Peta | Map Information



Muat Turun Peta  
Download Map

**rapidKL**

**Waktu Operasi Perkhidmatan/Service Operating Hours**

Inis - Sabtu/ Monday - Saturday: 6:00 pagi/ am - 12:30 tengah malam/ am  
 Ahad dan Cuti Umum/ Sunday and Public Holidays: 6:00 pagi/ am - 11:30 malam/ pm

\*Waktu operasi perkhidmatan adalah tertakluk kepada keadaan dan keperluan semasa/  
 Service operating hours are subject to current situation and needs.

03 7885 2585

myrapid.com.my

suggest@rapidkl.com.my

MyRapidKL

AskRapidKL

For more details, visit: <https://myrapid.com.my/bus-train/rapid-kl/rapid-kl-integrated-transit-map/>

All information is correct at the time of printing (as of 23 January 2025). This schedule may be subject to change.



# THE CAMPUS

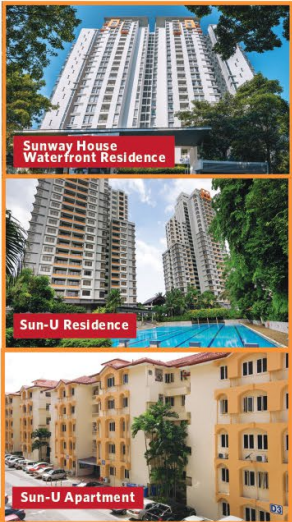
All information is correct at the time of printing (as of 23 January 2025). This schedule may be subject to change.



## Connectivity & Transportation



### On-Campus Accommodation



## PARKING OPTIONS\*

**SEASON PARKING AT SUNWAY PYRAMID**  
 10 mins walk to campus (via Canopy Walk)  
 RM80 per month  
 (excluding weekends and public holidays)  
**HOW TO APPLY?**  
 1. Prepare these Information/documents to create your account  
 i.) Student ID number  
 ii.) Course Name  
 iii.) Scanned copy of Student ID card  
 2. Create your Sunway Parking account  
<https://seasonpass.sunwayparking.com/dashboard>

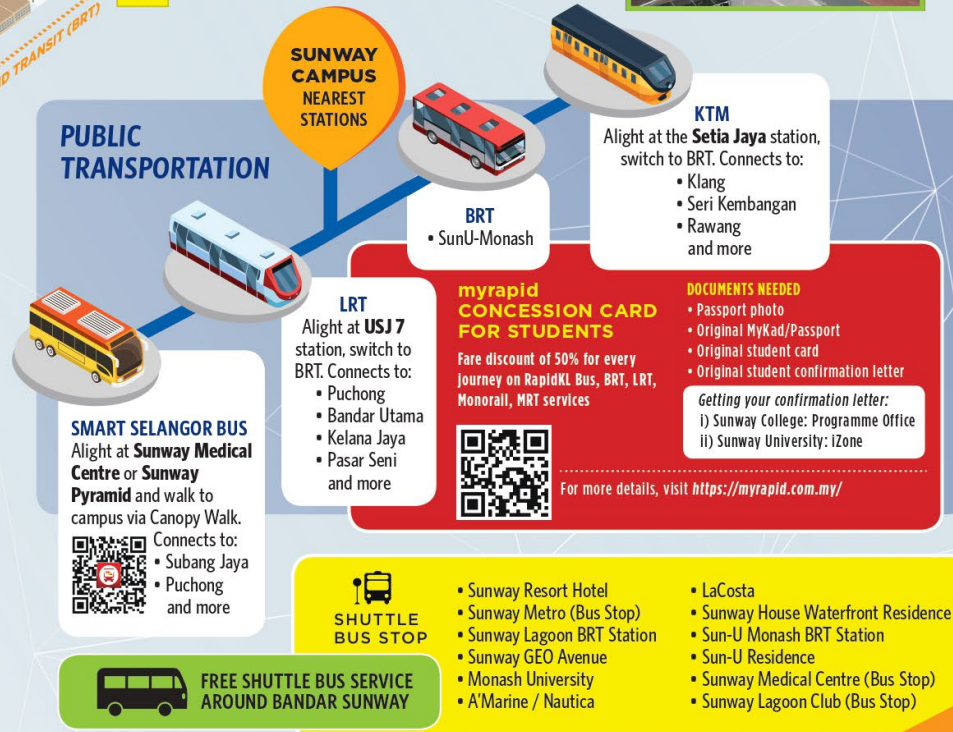
\*Prices stated are subject to change

Incorporate walking into your daily routine to give your mood and health a boost!





**SUNWAY UNIVERSITY BASEMENT PARKING**  
 First 2 hours : RM2.00  
 Subsequent hour : RM1.00  
 Maximum charge per entry : RM5.00  
 Ticketless & cashless - Payment via:  
 Touch & Go / Sunway Super App

**BRT COMPLEX (PARK & RIDE)**  
 Opposite Monash University  
 10 mins walk to campus (via Canopy Walk)  
 First 3 hours : RM3.00  
 Subsequent hour : RM1.00  
 Maximum charge per entry : RM7.00

## PUBLIC TRANSPORTATION



**Follow Us on  
Social Media:**

-  [facebook.com/SunwayUniversity](https://facebook.com/SunwayUniversity)
-  [@SunwayU](https://twitter.com/SunwayU)
-  [@SunwayUniversity](https://www.instagram.com/SunwayUniversity)
-  [@SunwayUniversityOfficial](https://www.youtube.com/SunwayUniversityOfficial)
-  [linkedin.com/school/sunway.university](https://www.linkedin.com/school/sunway.university)

