



SUNWAY UNIVERSITY

A Guide to Sunway University's Sustainable Initiatives





SUNWAY UNIVERSITY

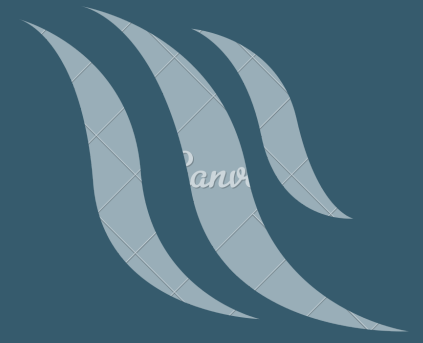
Butterfly & Herb Garden



Sunway College, Level G
College Entrance



WHAT IS THE BUTTERFLY & HERB GARDEN?



EARLY MOMENTS

Initially, it was only called the Butterfly Garden, carrying out its simple and important duty to bring in more native insects to increase biodiversity.



TURNING POINT

Butterfly & Herb Garden :

An initiative by
Facilities Services Department
&
School of Hospitality and Service
Management (SHSM)



SUNWAY UNIVERSITY

PURPOSE



The flowers and herbs planted here are used by SHSM for:

- culinary teaching purposes
- in the learning kitchens
- used and served at Athanor Restaurant, located on the 6th Floor, University Building

Introducing the herbs to the garden, built upon the founding purpose of creating a harmonious ecosystem for various native insects.



SUNWAY UNIVERSITY

RULES & REGULATIONS

PLEASE FOLLOW THE RULES & REGULATIONS TO HELP US KEEP THE GARDEN CLEAN, CONDUCIVE AND GREEN AT ALL TIMES.



Do not pluck the flowers and herbs without permission from the Facilities Services Department (FSD).



Walk along the stone pathway and do not step on the lawn grass.



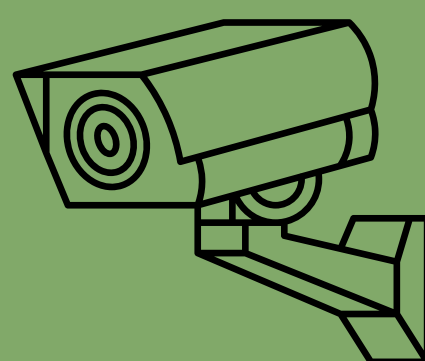
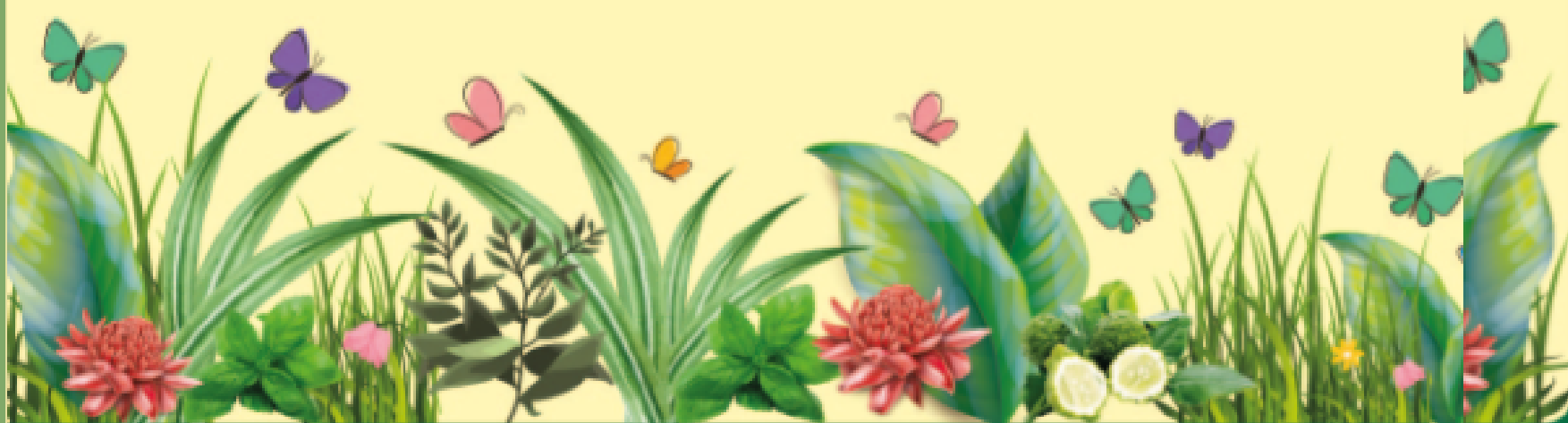
Do not move the garden chairs from the original location.



Do not leave litter in the garden.



Do not remove the plant tags.



CCTV Surveillance!



WHAT TYPE OF HERBS ARE GROWN?



TYPE OF HERBS

A

1. MURRAYA KOENIGII/CURRY LEAVES/ DAUN KARI

B

2. ORTHOSIPHON ARISTATUS /MISAI KUCHING
3. OCIMUM BASILICUM/THAI BASIL/ DAUN SELASIH
4. SPINACIA OLERACEA/BAYAM BRAZIL
5. SALVIA ROSMARINUS/ROSEMARY
6. APIUM GRAVEOLENS /CELERY
7. PETROSELINUM CRISPUM/PARSELY

C

8. ALOE VERA/ LIDAH BUAYA
9. HIBISCUS SABDARIFFA/ RIBENA
10. OKRA/ BENDI

D

11. CITRUS X MICROCARPA / CALAMANSI LIME / LIMAU KASTURI
12. CITRUS X AURANTIIFOLIA/KEY LIME/ LIMAUNIPIS
13. CENTELLAASIATICA/CITRUS X AURANTIIFOLIA

E

14. VIETNAMESE CORIANDER/POKOK DAUN KESUM
15. GARLIC CHIVES/KUCHAI
16. CYMBOPOGON CITRATUS/LEMON GRASS/ SERAI

F

17. ETLINGERAELATIOR /TORCH GINGER/ BUNGA KANTAN

G

18. PENNYWORT/ PEGAGA

H

19. CURCUMA LONGA/TURMERIC/KUNYIT

I

20. COSMOS CAUDATUS/ULAM RAJA
21. SOLANUM MELONGENA/BRINJAL

J

22. PANDANUS AMARYLLIFOLIUS /PANDAN



CHALLENGES WE FACE

Weather

We are unable to rear certain herbs due to the varying abilities of the plants to acclimate to the local conditions.

This open space will put the plants through various weather conditions and hence the need to select resilient plant variants.

Space

Another challenge is the space constraint. Unfortunately, we cannot rear plants that need large spaces to grow and expand.

Similar to us, plants deserve to be in the right space to be their best self!

Security

Due to security constraints, illegal parkers that enter our space can kill or harm our plants.



ROUTINE, CARE & MAINTENANCE

- **Watering the plants**

The plants are watered daily

- **Fertilising**

On a weekly or bi-monthly basis, we fertilise the plants with neem spray or compost that we make here on our Sunway campus

- **Harvesting Day**

Now, when the herbs have matured, the herbs will be harvested by the culinary chef & students.

The School of Hospitality and Service Management (SHSM) Chef and Students collectively harvest the herbs and flowers before turning them into delicious dishes



SUNWAY UNIVERSITY

THANK YOU FOR LEARNING ABOUT OUR BUTTERFLY AND HERB GARDEN

