

2024
IEM(S)IE
2nd International Conference on Emerging Materials
for Sustainable Energy and Environment



2nd International Conference On Emerging Materials for Sustainable Energy and Environment

Conference Information Kit

<https://sunwayuniversity.edu.my/emsee2024>

Overview

- [Introduction](#)
- [Conference Registration](#)
- [Opening Session](#)
- [Oral Presentation Guidelines](#)
- [Poster Presentation Guidelines](#)
- [Other Info](#)
- [Water Stations](#)
- [Getting To Sunway City From Airport](#)
- [Direction To Basement Parking At Sunway University](#)
- [Direction To Sunway University Building From Carpark](#)
- [Direction To JC 3](#)
- [Meal Information](#)
- [Emergency Information](#)
- [Other Inquiries](#)

Introduction

- ❖ Sunway Centre for Electrochemical Energy and Sustainable Technology (SCEEST), School of Engineering and Technology, Sunway University extends a warm invitation to all participants.
- ❖ We await your valuable contributions to this prestigious event and encourage your active involvement throughout the conference at Sunway University.
- ❖ The theme of the 2nd EMSEE are “Energy Conversion, Energy Storage, Environmental Technologies and Machine Learning and Modelling”.



Conference Registration



Conference Hall JC3, Level 1,
Sunway University

Registration Details



Registration timing is as follows:

16th December 2024 (Monday) - 8:00 am to 9:00 am

17th December 2024 (Tuesday) – upon request

18th December 2024 (Wednesday) – upon request



Conference venue directions:

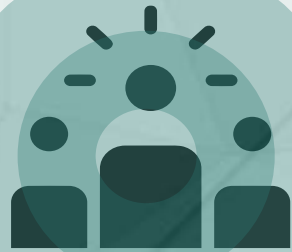
From the university's foyer, you may use the elevators on both sides (next to Fresco or the Tun Hussein Onn Sunway Library), or the stairs (in front of Fresco). You can reach JC3 by using the escalators in front of the Tun Hussein Onn Sunway Library at UG Level and Starbucks at M Level.



All participants and attendees will be given a E-certificate of participation via email upon completing the EMSEE 2024 evaluation form.

Opening session

The Conference opening session will be held on Monday, 16th December 2024, at 9:00 am in Conference Hall JC3



The conference reception will begin immediately after registration.

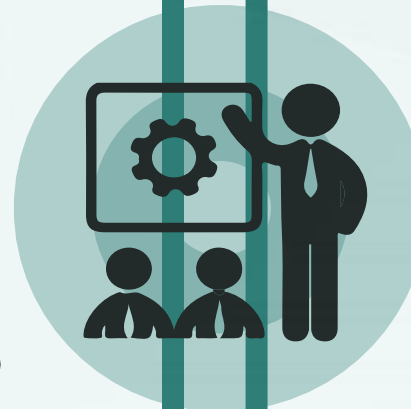
All participants are advised to come early and stay in the JC3 to ensure a smooth transition from the opening session to the conference reception



Guidelines

Oral presentation

- ❖ Contributed oral presentations are allocated 15 minutes, followed by 5 minutes for Q&A
- ❖ Please submit your PowerPoint presentation by 9th December 2024 via email to emsee2@sunway.edu.my
- ❖ To help us organize, kindly save your presentation file using your abstract number (e.g., EMSEE2024 EC- 001)



Poster presentation

- ❖ The poster should be prepared in A1 size (594 mm x 841 mm) in portrait orientation
- ❖ Presenter should be available during the allocated presentation times, which are scheduled during the coffee breaks. Please refer to the conference programme for the specific coffee break sessions
- ❖ Please mount your poster between 8:30 am to 9:00 am on your specified day, and ensure the poster is removed at the end of the day.

Other info



Vendor Exhibition

The vendor exhibition will be held from 16th-18th December from 9:00 am – 5:00 pm in front of the Conference Hall JC3. You are encouraged to visit the exhibition during coffee breaks and lunch



Going Green!

Free tote bag will be provided so please consider bringing a travel mug for coffee or water bottle



Online Sharing

If you wish to share or tweet about the conference, the hashtag is **#EMSEE2024**



Prayer Room

Prayer rooms are located at Level M of the Sunway University building. The male prayer room is located behind the Chak'z 1964 Café. For female prayer room is located at the end of the West wing of the building (turn to right)

Water Stations



Please note that our campus is plastic-free. We encourage you to bring your own water bottle, as disposable plastic bottles and cups are not allowed. Don't worry, each participant will receive a tumbler during registration, which you can use at the water dispensers next front of Fresco (next to the lift)



**Where do we
meet?**

Welcome to Sunway University



Getting to Sunway University from airport

Train



- From Kuala Lumpur International Airport Terminal to KL Sentral
- KL Sentral to USJ7 (Using LRT)
- USJ7 to SunU-Monash (Using BRT)
- Walk 8 min to Sunway University

Total Duration: which takes 1 hour 53 minutes and costs RM 26 - RM 58

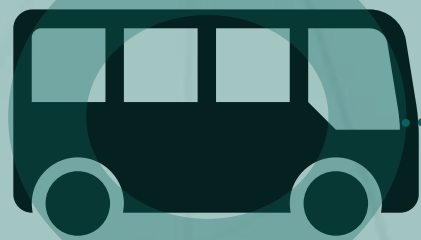
Taxi service counters are available at the International Arrival Hall.

It will take approximately 50 minutes to 1 hour from KLIA to Sunway University

Link to Taxi Booking:

<https://airports.malaysiaairports.com.my/getting-around-transport-car/taxi/metered-taxi>

Bus RapidKL



- Bus RapidKL which costs RM 17 - RM 30 and takes 2 hours 40 minutes
- From Kuala Lumpur International Airport Terminal to KL Sentral
- Take another bus at Wisma Belia to Apartment Mentari 2
- Walk 10-15min to Sunway University

Link to Bus Schedule:

<https://www.rome2rio.com/s/Kuala-Lumpur-Airport-KUL/Sunway-University>

GRAB Car



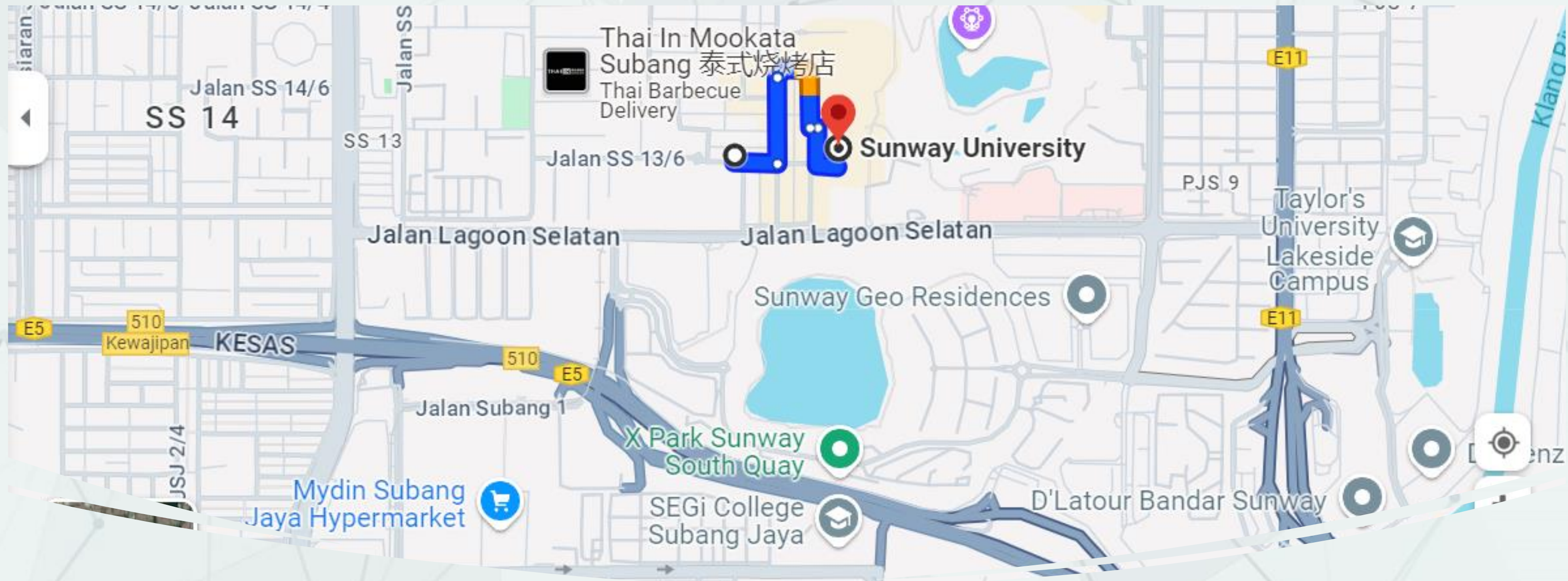
- Costs RM 75 - RM 90 for 40 minutes

Google maps link: <https://maps.app.goo.gl/aX2hUR4AtEu78fhV8>

SUNWAY CAMPUS

Sunway City





Sunway University on Google Maps

Address: No. 5, Jalan Universiti, Bandar Sunway, 47500 Selangor Darul Ehsan, Malaysia

GPS Coordinates to Sunway University

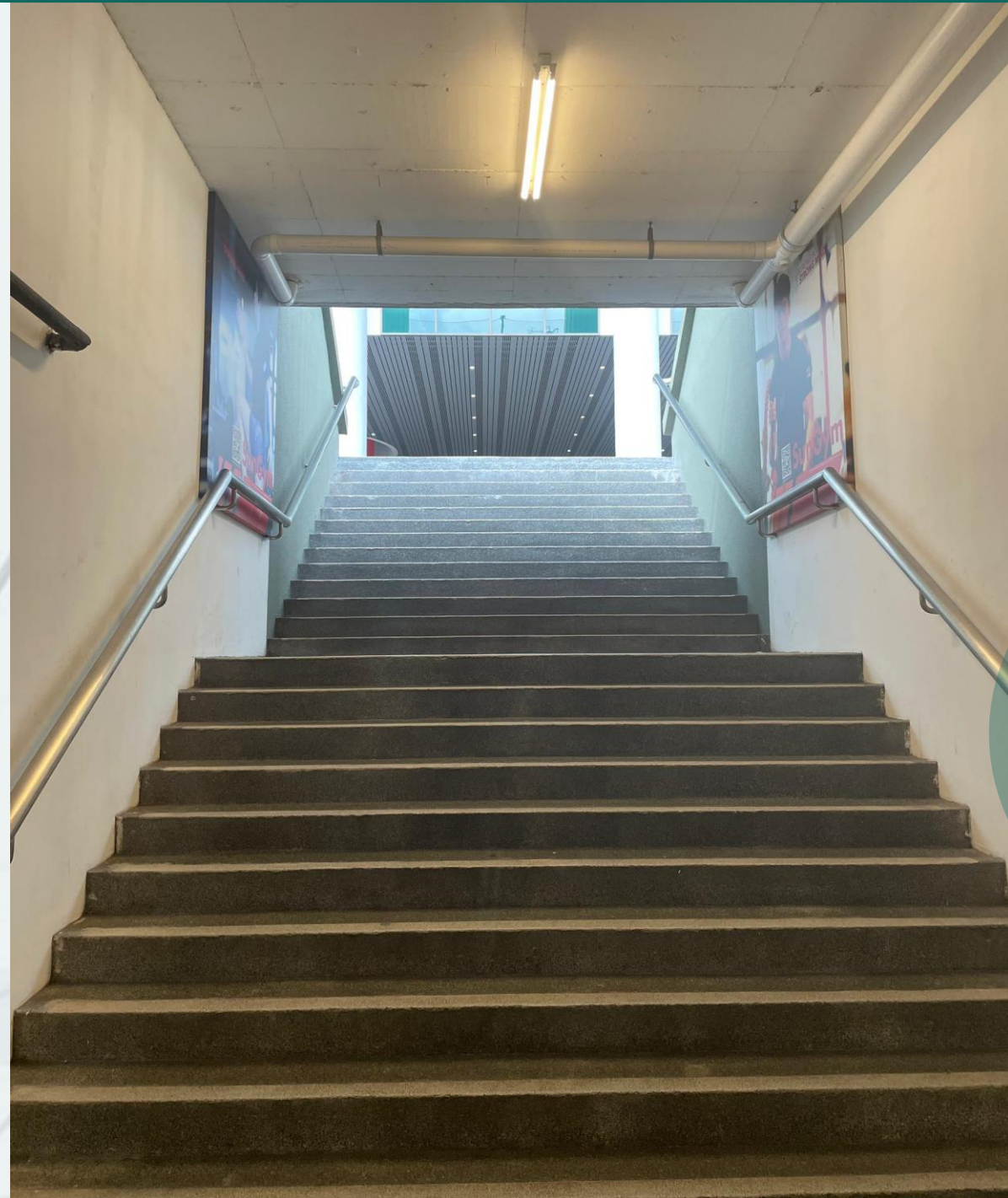
Latitude: 3.0672° N; Longitude: 101.6038° E

Direction to basement parking at Sunway University

- If you're coming by car, you may park at the Basement Level Sunway University Parking which is located under the Football Field with a charge per entry RM 5/day (Using Touch n Go card only)
- Other alternative parking we can recommend is at the BRT Park (SunU-Monash Station), which is a five-minute walk to university campus Charge per entry RM 7/day
- Follow Signage: When you arrive at the university, look for signs directing you to the parking areas



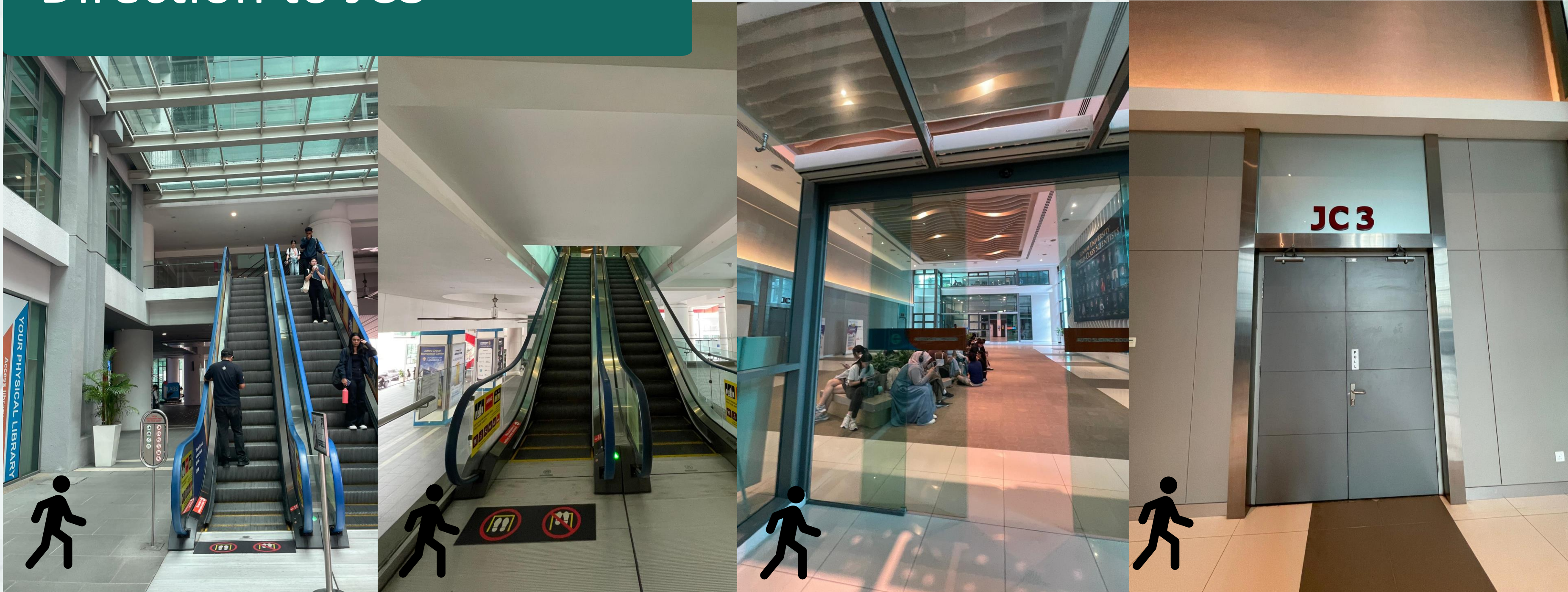
Direction to Sunway University building from carpark



Sunway University Foyer

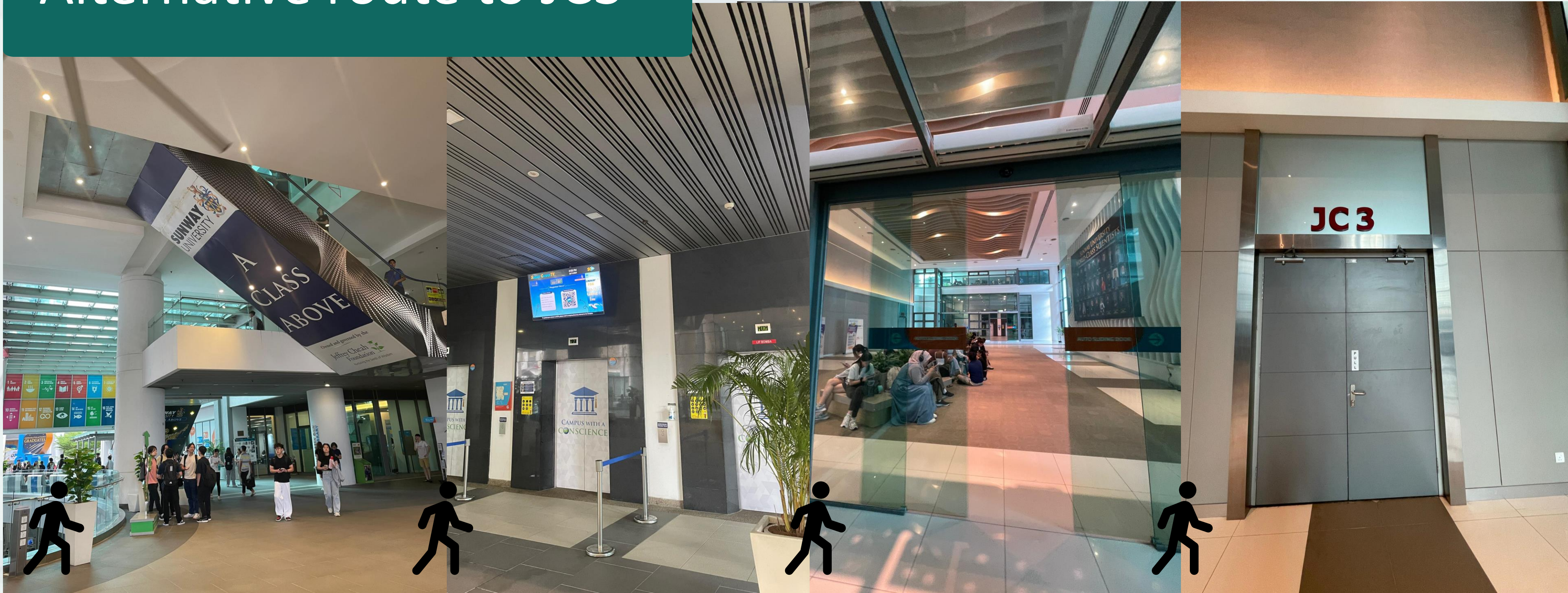


Direction to JC3



- ❖ After walking pass the Sunway University Foyer, take the escalator near the library to Mezzanine Floor (M)
- ❖ Use escalator again on Mezzanine Floor to Level 1
- ❖ You will see JC 3 in front of you

Alternative route to JC3



- ❖ After walking pass the Sunway University Foyer, take the lifts to Level 1 (only 1st & 3rd lifts will go to Level 1)
- ❖ Pass through the sliding door
- ❖ You will see JC 3 after enter the sliding door

Meal Information

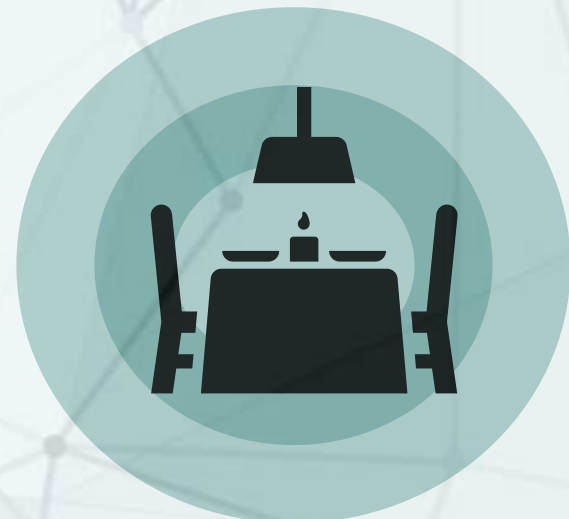
The background of the slide is a futuristic laboratory or cleanroom. It features several stainless steel cylindrical containers, some with green plants growing on top. A globe is visible in the lower center, and various pieces of scientific equipment and a laptop are scattered throughout. A complex network of dark lines and dots is overlaid on the entire scene, creating a digital or data-driven aesthetic.

MEAL INFORMATION



MEALS

- All registered participants will receive meal coupons upon registration
- These coupons will cover lunch and dinner for 3 days (16th to 18th December)
- Please present your coupon to the organizer at the designated lunch or refreshment breaks



CONFERENCE NETWORKING DINNER


- Join us for a special networking dinner on December 17th, 2024.
- Sunset Terrace, Level 1, Sunway Resort Hotel, from 6:30 pm to 10:00 pm
- Only participants who have received a networking dinner coupon will be entitled to attend



***Breakfast and tea breaks will be served in front of JC3, while lunch will be provided at Chak'z 1964 Cafe**



Conference Dinner at Sunset Terrace, Sunway Resort Hotel:
<https://www.sunwayhotels.com/sunway-resort/dining/sunset-terrace>



Emergency Information

Assembly Point B (Sunway Bus Parking)



Level

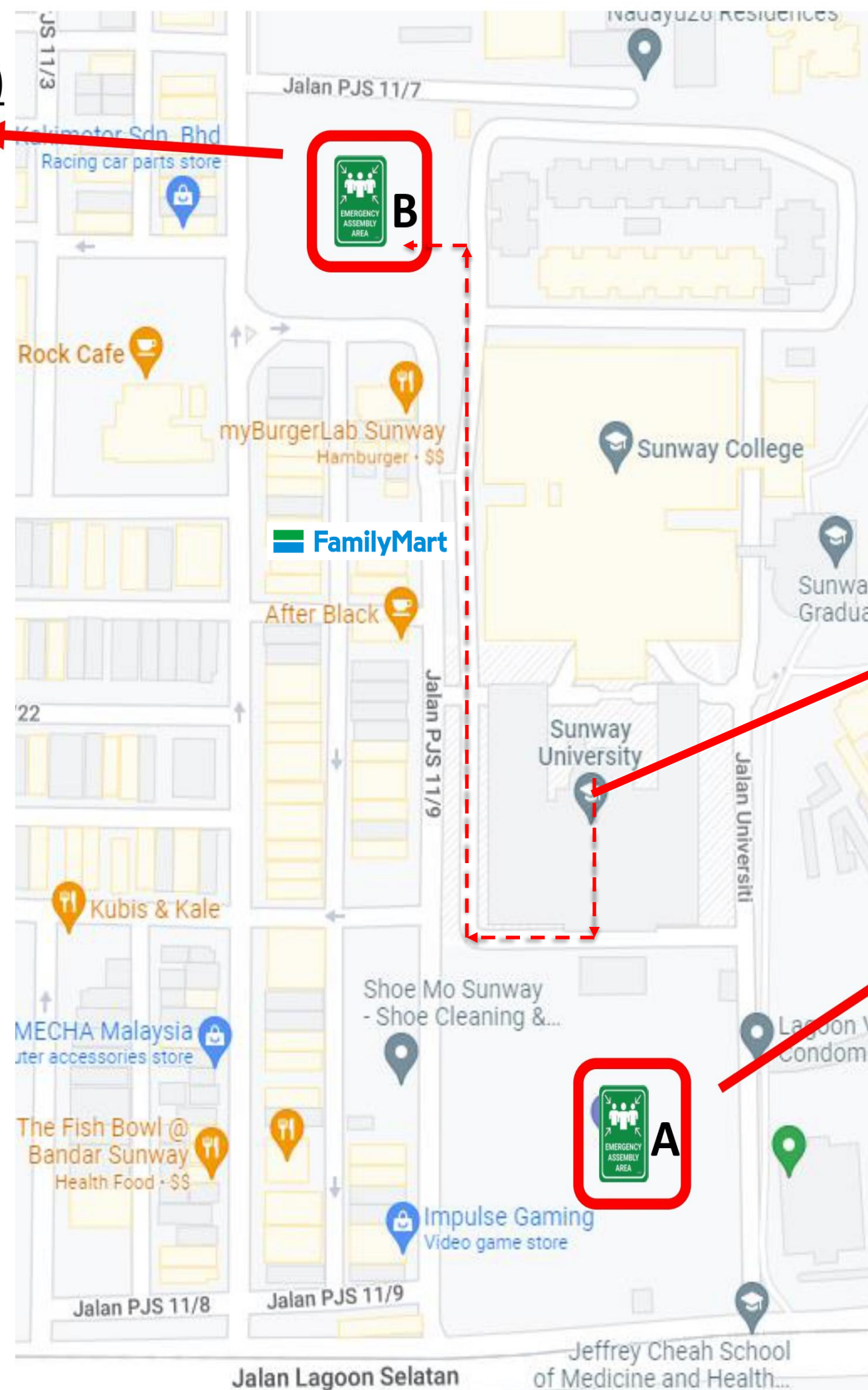


Floor Marshal

9
8
7
6
5
4
3
2
1
Mezz
G
B1
B2

Evacuation Emergency Process.

Staff / Students to assemble at the designated Assembly Areas and according to the specified Office / Class Level sequence as per above.



JC3, Level 1

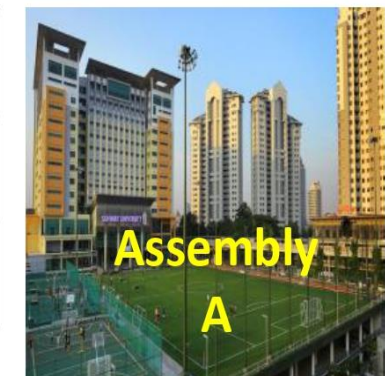
Assembly Point A (Football Field)

Level



Floor Marshal

12
11
10



EMERGENCY PHONE NUMBERS

SECURITY : **03-7491 8777** (24 HOURS)
HEALTH & SAFETY : **03-7491 8678** (OFFICE HOURS)
NIGHTINGALE BAY : **03-7491 8670** (OFFICE HOURS)
(NURSE)
SU MAINTENANCE : **019-303 8949** (OFFICE HOURS)

em

For Other Inquiries

Please contact us at



emsee2@sunway.edu.my

2024 EMSEE

2nd International Conference on Emerging Materials
for Sustainable Energy and Environment

Thank you !

For your time spending reading and we believe that this information and guidance will help you navigate smoothly to the EMSEE 2024 conference at Sunway University

See you at Sunway University!