

EDUCATION

Postgraduate
- Prospectus -
2025

SUNWAY
UNIVERSITY



A CLASS ABOVE



CONTENTS

- 1 • Why study at Sunway University?
- 2 • Entry Requirements
- 3 • How to Apply
- 4 • Scholarships & Bursaries
- 5 • Master of Education (Research)
- 6 • Master of Education (Open and Distance Learning)
- 7 • Master of Education (Taught)
- 8 • Doctor of Philosophy In Education



CONTACT:

SUNWAY UNIVERSITY DU025 (B)
Registration no : 200701042913 (800946-T)

No. 5, Jalan Universiti, Bandar Sunway, 47500 Selangor Darul Ehsan, Malaysia.

sunwayuniversity.edu.my

info@sunway.edu.my

+6 (03) 7491 8622

SunwayUniversity

@SunwayU



Owned and governed by the



SUNWAY IS ONE OF THE TOP 150 UNIVERSITIES IN THE WORLD UNDER 50 YEARS OLD

As one of Malaysia's leading and internationally recognised private universities, Sunway University is positioned amongst top universities in the world by QS World University Rankings. Sunway University is ranked #1 private university in ASEAN region by AppliedHE ASEAN Private University Ranking 2025 and recognised as the #1 Malaysia's highest-ranked private non-government linked university in the Times Higher Education World University Rankings 2025. The University is also #539 in the QS World University Rankings 2025.

Sunway University has been awarded #1 in Graduate Employability among all universities in Malaysia, for the third consecutive year, by Talentbank Group through the National Graduate Employability Index.

The University has achieved a significant milestone by making its debut in the Academic Ranking of World Universities (ARWU) for 2024. This achievement places Sunway University among the top five universities in Malaysia, alongside the top four research-intensive public universities, and establishes it as the only private higher education institution in the country to be included in this prestigious global ranking.

Collaborating with world class partners - Lancaster University and Le Cordon Bleu International, Sunway University offers premier education with international repute. The University also partners University of Oxford, University of Cambridge, Harvard University, Massachusetts Institute of Technology and University of California, Berkeley.

MALAYSIA'S #1 NON-GLU* PRIVATE UNIVERSITY

as awarded by Times Higher Education



*Government-Linked University

The Only Private University in Malaysia to be included in the Academic Ranking of World Universities (ARWU) 2024



WHY STUDY AT SUNWAY UNIVERSITY?



Industry-relevant and job-ready programmes and curriculum



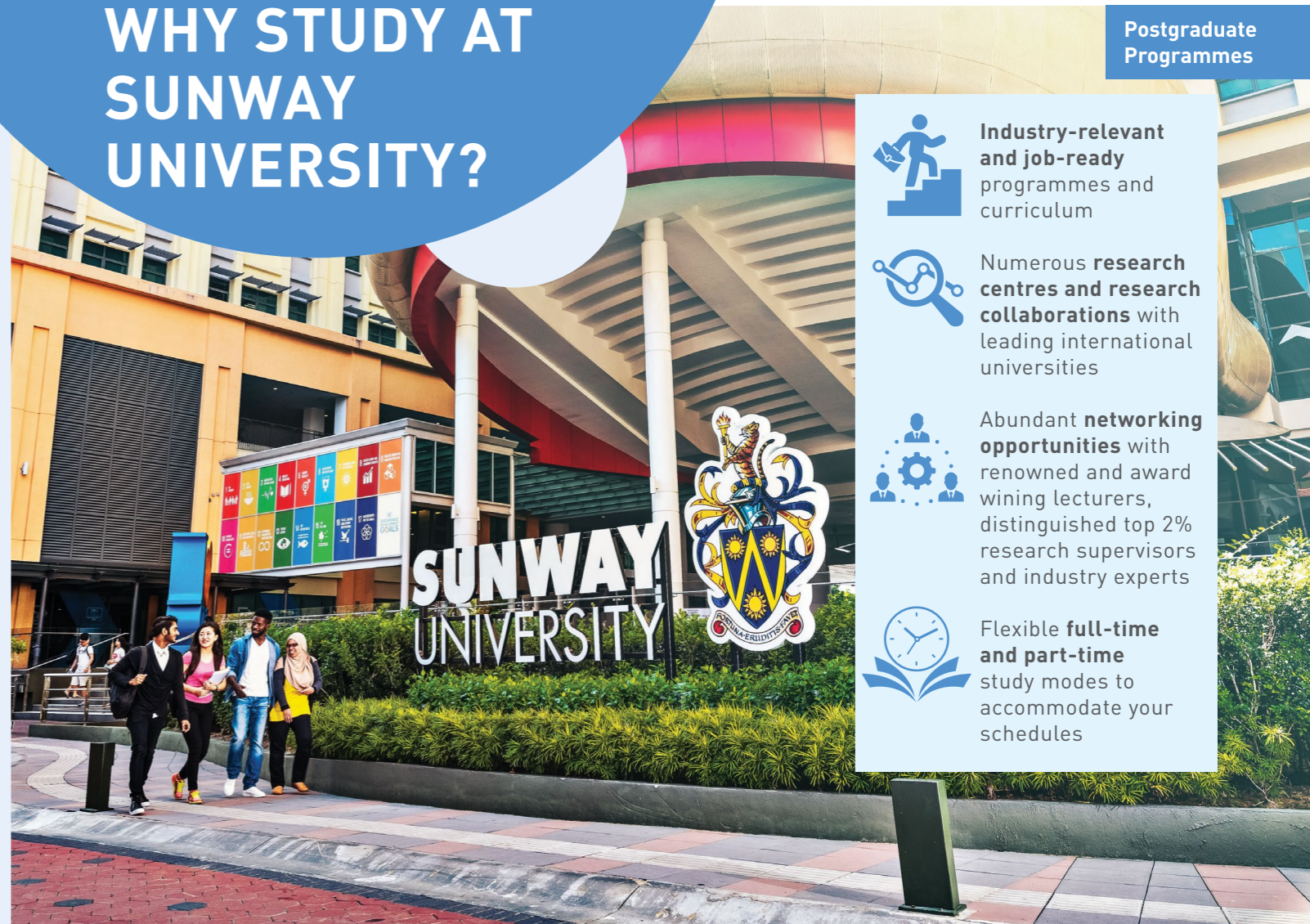
Numerous research centres and research collaborations with leading international universities



Abundant networking opportunities with renowned and award winning lecturers, distinguished top 2% research supervisors and industry experts



Flexible full-time and part-time study modes to accommodate your schedules



Diverse Specialisation:

Offers four specialisations: Educational Psychology, Curriculum & Instruction, Leadership & Management, and Education Technology. For instance, specialising in educational psychology will enable students to address current issues like well-being and mental health, promote supportive educational environments, and contribute to SDG 3 (Good Health and Well-being) and SDG 4 (Quality Education). Sunway University is a champion in advancing these Sustainable Development Goals.

Eligibility and Accessibility:

Accepts a wide range of qualifications, including those with lower CGPA but relevant work experience, ensuring accessibility to diverse students.

Enhanced Career Prospects:

Prepares graduates for roles such as educational leaders, curriculum developers, instructional coordinators, and education technology specialists.

Cutting-Edge Research Opportunities:

Sunway University champions the SDGs, integrating them into their research and educational practices. Students engage in cutting-edge research that advances knowledge and practice in education, including inclusive education aligning with SDG 4 (Quality Education). Moreover, with experts ranked in the top 2% globally, Sunway University offers collaborative opportunities for students to work alongside leading researchers.

Customised Workshops:

Participate in a series of workshops customised to the needs and levels of students, ensuring targeted skill development and effective learning outcomes.

Brand Reputation and World-Class University Ranking:

Leveraging the esteemed Sunway niche brand reputation and the institution's longstanding reputation for excellence. Ranked 586th in the QS World University Rankings and 103rd in the QS Asia University Rankings.

ENTRY REQUIREMENTS

PROGRAMME	ENTRY REQUIREMENTS	ENGLISH LANGUAGE REQUIREMENTS
Master of Education (Research)	<ul style="list-style-type: none"> A Bachelor's Degree (Level 6, MQF) or its equivalent, with a minimum CGPA of 2.75, as accepted by the HEP's Senate; OR A Bachelor's Degree (Level 6, MQF) or its equivalent, with a minimum CGPA of 2.50 but not meeting CGPA of 2.75, can be accepted subject to rigorous internal assessment; OR A Bachelor's Degree (Level 6, MQF) or its equivalent, not meeting CGPA of 2.50, can be accepted subject to a minimum of five (5) years working experience in a relevant field; OR Other qualifications equivalent to a Bachelor's Degree (Level 6, MQF) recognised by the Malaysian Government; OR An APEL.A Certificate (APEL T-7) (Recognition of Prior Learning) 	IELTS : 6.0 or equivalent
Master of Education (Open and Distance Learning)	<ul style="list-style-type: none"> A Bachelor's Degree (Level 6, MQF) or its equivalent, with a minimum CGPA of 2.50, as accepted by the HEP's Senate; OR A Bachelor's Degree (Level 6, MQF) or its equivalent, not meeting CGPA of 2.50, can be accepted subject to a minimum of five (5) years working experience in a relevant field; OR 	
Master of Education (Taught)	<ul style="list-style-type: none"> An APEL.A Certificate (APEL T-7) (Recognition of Prior Master of Education (Taught)) 	
Doctor of Philosophy in Education	<ul style="list-style-type: none"> A Master's Degree (Level 7, MQF) as accepted by the HEP's Senate; OR Other qualifications equivalent to a Master's Degree (Level 7, MQF), as accepted by the HEP Senate; OR An APEL.A Certificate (APEL T-8) (Recognition of Prior Learning) 	

HOW TO APPLY

PROGRAMME	APPLICATION CHECKLIST	CONTACT
Master of Education (Research)#	Kindly send the following documents to the respective programme email: For all programmes: <ul style="list-style-type: none"> Application form Copy of Identification Card/Passport Curriculum Vitae Copy of Academic certificates and transcripts # Additional documents required for postgraduate research programmes: <ul style="list-style-type: none"> Personal Statement Statement of Research Interest 	educmed-research@sunway.edu.my
Master of Education (Open and Distance Learning)		educmed-odl@sunway.edu.my
Master of Education (Taught)		educmed-conv@sunway.edu.my
Doctor of Philosophy in Education#		educphd@sunway.edu.my



MASTER OF EDUCATION (Research)

JPT/BPP[U](N/0110/7/0017/ PA17459)05/29



DURATION

Full-time - 2-3 years
Part-time - 4-6 years



INTAKES

January, July



RESEARCH PROGRAMME

Designed to cultivate world-class graduates, this programme empowers individuals to push the boundaries of knowledge, creativity, and problem-solving in the field of education.

What sets our programme apart is its holistic approach to education. We believe in nurturing all-round individuals, equipping them with the research skills, critical thinking abilities, and effective communication techniques necessary to thrive in today's complex world.

Aligned with our mission to advance knowledge and serve society, the Master of Education (by Research) programme prepares graduates to:

- Conduct groundbreaking research that advances the frontiers of educational understanding.
- Articulate their findings with clarity and precision, reaching diverse audiences with their insights.
- Implement research outcomes to drive positive change and innovation in educational practices.

Moreover, our commitment to lifelong learning ensures that graduates continue to evolve professionally, contributing to the dissemination of knowledge and fostering a culture of continuous improvement.

VALIDATED BY:



CAREER PROSPECTS



- Curriculum Developers
- Educational Leaders
- Education Technology Specialists
- Instructional Coordinators



SCHOLARSHIPS & BURSARIES

For more information regarding available scholarships and bursaries, please refer to <https://scholarship.sunway.edu.my/scholarships/academic-excellence-scholarships>

or scan

* Terms and conditions apply



PROGRAMME STRUCTURE

This programme is entirely research-based, complemented by postgraduate research methodology workshops, an annual research colloquium, and engaging data collection activities.

Our research methodology workshops foster interpersonal communication, facilitating collaborative learning among students. Directed reading sessions encourage interaction, especially when multiple students are guided by the same supervisor.

Participation in the research colloquium nurtures interpersonal communication skills within a collaborative research environment. Engaging in data collection activities further instills ethical engagement with relevant stakeholders, preparing students for real-world research scenarios.

Areas of Research

- Education Psychology
- Curriculum & Instruction
- Leadership & Management
- Education Technology

Subjects

- MED 1144 : Research Methodology
- MED 1134 : Thesis

Workshops

- Workshop 1: Introduction to Research
- Workshop 2: Reviewing the Literature
- Workshop 3: Research Purpose, Research Objectives, Research Questions and Hypotheses
- Workshop 4: Research Methodology for Quantitative Approach
- Workshop 5: Research Methodology for Qualitative Approach
- Workshop 6: Mastering Research Proposal and Thesis Writing
- Workshop 7: Generative AI for Research
- Workshop 8: SPSS for Beginners
- Workshop 9: NVivo/AMOS for Beginners

CONTACT

For more information, please email:
educmed-research@sunway.edu.my

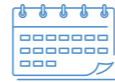
MASTER OF EDUCATION (Open and Distance Learning)

JPT/BPP[U](N-DL/0111/7/0012/PA17458)05/29



DURATION

Full-time - 1-3 years
Part-time - 2-5 years



INTAKES

January, March, May, July, September



TAUGHT PROGRAMME

CAREER PROSPECTS



- Curriculum Developers
- Educational Leaders
- Education Technology Specialists
- Instructional Coordinators

The Sunway University Master of Education (ODL) cultivates educational leadership fit for the new era of education, producing educators with strategic expertise, high ethics, collaborative mastery, and EdTech skills to guide and nurture students and institutions to success.

This programme is designed for professionals ready to advance their careers in the classrooms and boardrooms of the future – and who will ultimately shape the future of education. Pursue the Master of Education without sacrificing work and personal commitments, empowered through 100% online delivery and self-paced learning.

Strategically crafted with industry-informed subjects, this programme imparts skills and knowledge that give you a real-world advantage in a competitive job market. Whether it's a teaching or non-teaching, management or specialist role you're after, gain the expertise and qualification to confidently lead the way.

Raise your professional profile and open doors to greater career opportunities by building connections with your programme cohort. Receive guidance from leading Sunway University academics and industry experts, and connect with education professionals for peer-to-peer learning.

PROGRAMME STRUCTURE

Compulsory

- MED 1014 : Philosophy and Sociology of Education
- MED 1024 : Learning and Cognition
- MED 1034 : Research Methodology
- MED 1044 : Measurement, Assessment, and Evaluation
- MED 1084 : Trends and Futures in Digital Learning
- MED 1074 : Digital and Expanding Literacies
- MED 1054 : Design and Innovation in Sustainable Teaching and Learning

Electives (select 1)

- MED 1064 : Global Issues and Sustainable Education
- MED 1094 : People and Organisations
- MED 1104 : Foresight Leadership and Management

Project

- MED 1114 : Research Project I
- MED 1124 : Research Project II

CONTACT

For more information, please email:
educmed-odl@sunway.edu.my

MASTER OF EDUCATION (Taught)

JPT/BPP[U](N/0111/7/0022/PA17929)11/29



DURATION

Full-time - 1-3 years
Part-time - 2-5 years



INTAKES

January, March, May, July, September



TAUGHT PROGRAMME

CAREER PROSPECTS



- Curriculum developers
- Educational leaders
- Education technology specialists
- Instructional coordinators
- Early childhood educators

The programme delivers a comprehensive and engaging learning experience through its immersive and face-to-face coursework mode. Designed to meet the diverse needs of education professionals, the programme replaces examinations with project-based assessments, emphasising the practical application of knowledge and skills.

A recently introduced course on Artificial Intelligence in Education underscores the University's dedication to integrate cutting-edge technological advancements into pedagogy. Students benefit from the guidance of experienced instructors who bring extensive academic and practical expertise to foster a dynamic and enriching learning environment.

The programme is particularly suited for educators aiming to elevate their professional competencies, adopt innovative teaching strategies and expand their leadership potential. This programme equips students with the knowledge, tools and professional network needed to thrive in the ever-evolving education landscape.

PROGRAMME STRUCTURE

Year 1 (Part & Full Time: Compulsory)

- MED 1234 : Learning Cognition
- MED 1284 : Measurement, Assessment, and Evaluation
- MED 1194 : AI in Education
- MED 1244 : Educational Research Methodology
- PRJ 1304 : Research Project 1 (Full Time)
- PRJ 1314 : Research Project 2 (Full Time)

Year 2 (Part Time)

- PRJ 1304 : Research Project 1
- PRJ 1314 : Research Project 2

Elective Specialisations (Choose 1)

Instructional Technology

- MED 1254 : Design and Innovation in Sustainable Teaching and Learning
- MED 1264 : Digital and Expanding Literacies
- MED 1274 : Trends and Futures in Digital Learning
- MED 1214 : Global Issues in Educational Technology

Educational Management

- MED 1204 : Policy and Educational Planning
- MED 1304 : Human Resource Management in Education
- MED 1154 : Strategic Leadership in Education
- MED 1294 : Global Issues and Sustainable Education

Early Childhood Education

- MED 1164 : Theories and Practices in Early Childhood Education
- MED 1174 : Child Growth and Development
- MED 1184 : Inclusive in Teaching and Learning
- MED 1224 : Global Issues in Early Childhood Education

CONTACT

For more information, please email:
educmed-conv@sunway.edu.my



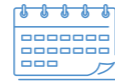
DOCTOR OF PHILOSOPHY IN EDUCATION

JPT/BPP(U)(N/0110/8/0016/PA17460)05/31



DURATION

Full-time - 3-6 years
Part-time - 4-8 years



INTAKES

January, July



RESEARCH PROGRAMME

CAREER PROSPECTS



- Curriculum Developers
- Educational Leaders
- Education Technology Specialists
- Instructional Coordinators

Pursue your passion for education with a Doctor of Philosophy in Education at Sunway University. Engage in advanced research, critical analysis, and scholarly enquiry guided by expert faculty, renowned for significant contributions to various educational fields.

These educators will mentor you, offering valuable insights and supporting research efforts to ensure you develop essential skills for making impactful contributions. The programme empowers aspiring scholars to push the boundaries of knowledge, creativity, and problem-solving in the field of education.

With a focus on rigorous research, critical thinking, and effective communication, we equip our graduates with the skills necessary to thrive in today's dynamic educational landscape.

Aligned with our mission to advance knowledge and serve society, the Doctor of Philosophy in Education programme prepares graduates to:

- Conduct original research in education, advancing knowledge.
- Communicate research findings effectively to diverse audiences.
- Apply research findings to improve educational practices.
- Foster lifelong learning and knowledge dissemination among graduates.



PROGRAMME STRUCTURE

This programme is entirely research-based, complemented by postgraduate research methodology workshops, an annual research colloquium, and engaging data collection activities.

Our research methodology workshops foster interpersonal communication, facilitating collaborative learning among students. Directed reading sessions encourage interaction, especially when multiple students are guided by the same supervisor.

Participation in the research colloquium nurtures interpersonal communication skills within a collaborative research environment. Engaging in data collection activities further instills ethical engagement with relevant stakeholders, preparing students for real-world research scenarios.

Areas of Research

- Education Psychology
- Curriculum & Instruction
- Leadership & Management
- Education Technology

Subjects

- PED 1134 : Research Methodology
- PED 2134 : Thesis

Workshops

- Workshop 1 : Introduction to Research
- Workshop 2 : Reviewing the Literature
- Workshop 3 : Research Purpose, Research Objectives, Research Questions and Hypotheses
- Workshop 4 : Research Methodology for Quantitative Approach
- Workshop 5 : Research Methodology for Qualitative Approach
- Workshop 6 : Mastering Research Proposal and Thesis Writing
- Workshop 7 : Generative AI for Research
- Workshop 8 : SPSS for Beginners
- Workshop 9 : NVivo/AMOS for Beginners

CONTACT

For more information, please email:
educphd@sunway.edu.my



SUNWAY
UNIVERSITY



A CLASS ABOVE

MALAYSIA'S



**IN GRADUATE
EMPLOYABILITY**

For the 3rd consecutive year, Sunway University has been recognised as Malaysia's No. 1 in Graduate Employability*.

We are immensely proud of the accomplishments of our graduates who have gone on to make a huge positive impact to the success of major Malaysian companies and indeed some of the world's leading organisations.

SUNWAY UNIVERSITY GRADUATES, TRULY A CLASS ABOVE

*Talentbank GE Index 2024

SUNWAY UNIVERSITY 200401015434 (653937-U) DU025(B) A member of Sunway Education Group No.5, Jalan Universiti, Bandar Sunway, 47500 Selangor Darul Ehsan.

OWNED AND GOVERNED BY THE JEFFREY CHEAH FOUNDATION Registration no : 200701042913 (800946-T)